



**HAL**  
open science

# Innovation, Finance, and Economic Growth: an agent-based model

Giorgio Fagiolo, Daniele Giachini, Andrea Roventini

► **To cite this version:**

Giorgio Fagiolo, Daniele Giachini, Andrea Roventini. Innovation, Finance, and Economic Growth: an agent-based model. 2017. hal-03455400

**HAL Id: hal-03455400**

**<https://sciencespo.hal.science/hal-03455400>**

Preprint submitted on 29 Nov 2021

**HAL** is a multi-disciplinary open access archive for the deposit and dissemination of scientific research documents, whether they are published or not. The documents may come from teaching and research institutions in France or abroad, or from public or private research centers.

L'archive ouverte pluridisciplinaire **HAL**, est destinée au dépôt et à la diffusion de documents scientifiques de niveau recherche, publiés ou non, émanant des établissements d'enseignement et de recherche français ou étrangers, des laboratoires publics ou privés.

# **Innovation, Finance, and Economic Growth: An Agent-Based Approach**

Giorgio Fagiolo

Daniele Giachini

Andrea Roventini



## EDITORIAL BOARD

**Chair: Xavier Ragot** (Sciences Po, OFCE)

**Members: Jérôme Creel** (Sciences Po, OFCE), **Eric Heyer** (Sciences Po, OFCE), **Lionel Nesta** (Université Nice Sophia Antipolis), **Xavier Timbeau** (Sciences Po, OFCE)

## CONTACT US

OFCE  
10 place de Catalogne | 75014 Paris | France  
Tél. +33 1 44 18 54 87

[www.ofce.fr](http://www.ofce.fr)

## WORKING PAPER CITATION

This Working Paper:  
Giovanni Marin, Francesco Vona, **Innovation, Finance, and Economic Growth: An Agent-Based Approach**,  
*Sciences Po OFCE Working Paper*, n°28, 2017-11-27.  
Downloaded from URL : [www.ofce.sciences-po.fr/pdf/dtravail/WP2017-28.pdf](http://www.ofce.sciences-po.fr/pdf/dtravail/WP2017-28.pdf)  
DOI - ISSN

## ABOUT THE AUTHORS

**Giorgio Fagiolo** Scuola Superiore Sant'Anna, Pisa, Italy.  
**Email Address:** [giorgio.fagiolo<at>santannapisa.it](mailto:giorgio.fagiolo@santannapisa.it)

**Daniele Giachini** Scuola Superiore Sant'Anna, Pisa, Italy.  
**Email Address:** [daniele.giachini<at>santannapisa.it](mailto:daniele.giachini@santannapisa.it)

**Andrea Roventini** Scuola Superiore Sant'Anna, Pisa, Italy.  
Also OFCE, Sciences Po, Paris, France.  
**Email Address:** [andrea.roventini<at>santannapisa.it](mailto:andrea.roventini@santannapisa.it)

## ABSTRACT

This paper extends the endogenous-growth agent-based model in Fagiolo and Dosi (2003) to study the finance-growth nexus. We explore industries where firms produce a homogeneous good using existing technologies, perform R&D activities to introduce new techniques, and imitate the most productive practices. Unlike the original model, we assume that both exploration and imitation require resources provided by banks, which pool agent savings and finance new projects via loans. We find that banking activity has a positive impact on growth. However, excessive financialization can hamper growth. In- deed, we find a significant and robust inverted-U shaped relation between financial depth and growth. Overall, our results stress the fundamental (and still poorly understood) role played by innovation in the finance-growth nexus.

## KEY WORDS

Agent-based Models, Innovation, Exploration vs. Exploitation, Endogenous Growth, Banking Sector, Finance-Growth Nexus.

## JEL

C63, G21, O30, O31.

# 1 Introduction

In this paper, we develop an agent-based model to study the co-evolution of innovation, finance and growth. More specifically, we investigate whether credit can stimulate growth and if excessive levels of financialization can hamper the virtuous cycle between technological innovation and output growth.

In the last decades, financial activities have been playing a constantly increasing role in the operation of domestic economies across the World. Such a tendency, nowadays known as *financialization* (Epstein, 2005) is evident in the share of finance-to-GDP series, which typically show an increasing trend in many developed countries (Philippon and Reshef, 2013).

The issue whether such a stronger financialization impacts on the patterns of country growth is, however, still poorly understood. Historically, the first seminal studies by Bagehot (1873) and Schumpeter (1911) argued that more finance implies stronger growth. Yet, subsequent studies dismissed this conclusion, proposing instead that financial development simply follows economic growth (Robinson, 1952). More recently, the empirical literature suggests that a complex and non-linear relationship exists between finance and growth. In particular, excessive level of financialization could hamper economic growth (more on this in Section 2).

From a theoretical perspective, the links between financial development and economic growth might be due to market imperfection and information asymmetries (Levine, 2005). Indeed, financial institutions may be beneficial for economic growth as they can reduce frictions and provide information about investment opportunities (Boyd and Prescott, 1986; Acemoglu and Zilibotti, 1997; Greenwood and Smith, 1997).

Much of the existing models, however, do not explicitly address the role of innovation in the finance-growth nexus. Conversely, a large stream of literature grounded in the evolutionary-economics tradition (Nelson and Winter, 1982, 2002; Dosi and Nelson, 1994, 2010) emphasizes the fundamental functions assumed by innovation in fueling self-sustaining processes of growth (Silverberg and Verspagen, 1995; Fagiolo and Dosi, 2003; Dosi et al., 2010, 2013, 2015). For example, evolutionary endogenous-growth models stress how innovation (i.e., exploration of new technologies) is typically carried out by boundedly-rational individuals through a trial-and-error process characterized by strong uncertainty (Dosi, 1988). In such a setup, financial intermediation can play a fundamental role in promoting or hampering growth, depending on how it interacts with the evolutionary processes generating innovation.

In line with the foregoing intuitions, this paper explores the effects of banking activity in economies characterized by boundedly-rational agents who strive to innovate in strongly uncertain environments. More specifically, we analyze whether the presence of a banking sector exerts a positive impact on growth. Furthermore, we study if, and how, an increasing financialization of the economy affects the growth patterns of the economy. To do that, we build upon the endogenous-growth agent-based model introduced in Fagiolo and Dosi (2003)

(FDM, thereafter).<sup>1</sup> The model is populated by boundedly-rational agents (firms) who produce a homogeneous good using technologies spatially located on some productivity space. In the original model, firms can either produce, or perform R&D (and possibly generate innovations), or imitate existing techniques. However, all these activities do not require explicit resources. In particular, the only cost associated to both R&D and imitation is in terms of foregone production.

We extend the original model introducing a banking sector. We assume that, in every period, agents consume a fraction of their production and save the rest to support future imitative or innovative activities, in order to adopt new technologies and increase their future output. Imitation and exploration are now costly activities that require external resources if firms do not have sufficient internal funding. Therefore, we introduce in the model a stylized banking sector that collects agent savings as deposits and provide loans to firms willing to engage in innovation or imitation, but with insufficient internal funds.

We run an extensive set of Montecarlo experiments to study the simulated behavior of our economy. Our results show that, in general, the introduction of a banking sector allows for higher growth (and lower output volatility) in the long-run. We then study the effects of increasing the degree of financialization in the economy. In order to measure financialization, we focus on financial depth, defined as total amount of loans over GDP (Beck and Levine, 2004). We find that the relation between financial depth and growth is non-linear and bell shaped. This implies that, for low financialization levels, increasing financialization has a positive marginal effect on growth, while the sign is reversed for larger financial-depth values.

The intuition behind our results is straightforward. If banks are present in the economy, the financial constraints of firms are relaxed. They can therefore perform more R&D, and ultimately introduce at a higher pace innovative technologies that quickly diffuse in the economy. This has a positive impact on the average growth rate of the economy. However, if banks excessively finance R&D activity, firms perform too much exploration of the technological space and the amount of loans booms. In turn, a larger flow of loans might imply a waste of resources, due to many unsuccessful R&D projects (Dosi and Lovallo, 1997). In other words, finance may tilt the balance between exploration and exploitation in favor of the former. That is beneficial when agents are over-exploiting the existing techniques, but it may become detrimental to growth when resource accumulation via production is not strong enough due to excessive exploration.

To dig deeper into the links between financial depth and economic growth, we run a set of econometric analyses on simulated data to better explore the factors driving the non-linear relationship between financial depth and growth. First, we control for banking crises, adding to the regression the value of total assets of bankrupted banks (together with its interaction with financial depth). Results show, as expected, that banking crises have a negative effect on growth,

---

<sup>1</sup>On agent-based computational economics, see Tesfatsion and Judd (2006) and LeBaron and Tesfatsion (2008). Fagiolo and Roventini (2017) survey of agent-based models in macroeconomics with emphasis on economic policy.

but they do not account for the whole detrimental impact of higher levels of financial depth. Second, we further explore the relation between innovation and finance, studying whether different setups for the processes governing technical change and banking-sector behavior affect the finance-growth nexus. Overall, our findings are robust to alternative parametrizations, but appear to be more sensitive to variations in the technical-change setups than they do for changes in those governing banking-sector behaviors.

Our results have a clear policy implication: more stringent macro-prudential regulation should have a positive impact not only on financial stability, but also on long-run growth. In that, the economy would become less sensitive to interest rate variations.

The rest of the paper is organized as follows. Section 2 discusses some related literature. Section 3 introduces the model while Section 4 presents our results. Finally, Section 5 concludes.

## 2 Related Literature

Several empirical papers have studied the relationship between finance and economic growth. In a seminal contribution, King and Levine (1993a) find that financial development has a positive effect on growth (see also Rajan and Zingales, 1998; Levine et al., 2000; Beck et al., 2000; Beck and Levine, 2004). Furthermore, Bodenhorn (2016) shows that the financial system was important in the history of the U.S. because of the role it played in mobilizing savings, allocating and controlling capital, and mitigating opportunism. The activity of the financial sector can promote growth also through banking integration (Arribas et al., 2017), deregulation (Jerzmanowski, 2017) and financial development, via the production of new ideas (Madsen and Ang, 2016).

On the theoretical side, Levine (2005) lists five channels through which the financial system can entail positive effects on growth: i) producing, processing, and collecting information in order to allocate capital to the most profitable firms (Boyd and Prescott, 1986; King and Levine, 1993b; Greenwood and Jovanovic, 1990); ii) monitoring and improving corporate governance to induce managers to maximize firm value (Stiglitz and Weiss, 1983; Bencivenga and Smith, 1993; De la Fuente and Marín, 1996); iii) facilitating trade, hedging, and pooling of risk to enhance resource allocation (Levine, 1991; Allen and Gale, 1997; Acemoglu and Zilibotti, 1997); iv) pooling and mobilizing savings for investments reducing financial frictions (Sirri and Tufano, 1995; Acemoglu and Zilibotti, 1997); and: v) fostering specialization and easing the exchange of goods and services (Greenwood and Smith, 1997).

The issue whether more finance implies more growth, however, has not been settled yet. Indeed, many empirical contributions find mixed or negative impact of finance on long-run growth (Stolbov, 2017; Capolupo, 2017; Nyasha and Odhiambo, 2017). In particular, Kaminsky and Reinhart (1999) and Schularick and Taylor (2012) document that an increase of credit is a good predictor of banking crises, which in turn dampen growth. Furthermore, Kneer (2013) and Cecchetti and Kharroubi (2015) show that misallocation of skilled workers and crowding

out of the real activity may occur when the financial sector is too big.

Finally, a number of papers (Beck et al., 2012; Cecchetti and Kharroubi, 2012; Law and Singh, 2014; Arcand et al., 2015; Benczur et al., 2017) try to provide rationales to interpret the contradicting evidence about the inverted U-shaped relation between finance and growth. In particular, finance has a positive marginal effect on growth (Levine, 2005) up to a certain degree of financialization. Beyond that threshold, an increase in financialization chokes the real economy, thus exerting a detrimental effect on growth. Misallocation of skilled workers and crowding out of real activities may account for such a negative effect.

In this paper, we complement this explanation showing that when the banking sector weakens financial constraints by supplying increasing amounts of loans, the balance between exploration of new technologies and exploitation of existing ones is tilted. Indeed, when exploitation rates in the economy are relatively high, increasing loans delivers higher levels of growth. Conversely, when exploration rates take off, more finance typically means more unsuccessful R&D projects, with a consequent waste of resources and lower growth.

### 3 The Model

We build upon Fagiolo and Dosi (2003) to study an economy evolving over finite time steps, indexed by  $t = 0, 1, \dots, T$ . In the original FDM model, the economy is populated by  $N_f$  firms located on a 2-dimensional boundary-less lattice, whose nodes are defined by a pair of coordinates  $(x, y)$ . The lattice represents the (unbounded) technological space.<sup>2</sup> Each node can be empty (in the metaphor, *sea*) or occupied (i.e., an *island*).

Islands are technologies that firms can employ to produce a homogeneous good. Islands (indexed as  $j = 1, 2, \dots$ ) are scattered randomly across the nodes of the lattice according to a i.i.d. Bernoulli distribution with  $\text{Prob}\{(x, y) = \textit{island}\} = \pi$ . The higher  $\pi$ , the larger technological opportunities in the economy (Dosi, 1988; Dosi and Nelson, 2010). Island locations are not known ex-ante by firms.

Each island  $j$  located in  $(x_j, y_j)$  is characterized by a productivity coefficient  $s_j = s(x_j, y_j) > 0$ , equal to the output that the island can produce if only one firm is employing that technology. In general, both total and average island output is increasing in the number of firms employing that technology.

In every time period, any agent can be in one out of three mutually exclusive states: (i) miner (*mi*); (ii) imitator (*im*); (iii) explorer (*ex*). Miners are located on islands and produce a homogeneous good (i.e., the numeraire of the economy) using the technology provided by the island where they live. We assume that every firm can employ only one technology in any given time period, whereas the same technology can be used by many firms (i.e., islands can accommodate many firms but any firm can occupy only one island at any time). Explorers look

---

<sup>2</sup>We do not attach any meaning to the  $x$  and  $y$  dimensions. A 2-dimensional lattice is chosen only for descriptive reasons.



for new, previously unknown, islands traveling across the lattice. If they find one, they start producing there and the new technology enters the set of already-known islands. Imitators move towards an already known island to ultimately adopt its technology and start producing there. In the metaphor, miners produce mastering existing technologies, imitators engage in technologic adoption, spreading the diffusion of more productive techniques, whereas explorers try to discover new technologies by investing in risky R&D activities.

At time  $t = 0$ , only one island is known and is located for simplicity in the origin  $(0, 0)$ . We assume that, on average, the productivity coefficient of an island is increasing in the distance of that island from the origin, where the distance is defined as the Manhattan metric over the lattice. Therefore, we assume that on average the farther one goes from node  $(0, 0)$ , the more efficient are the technologies that can be found.

We extend the original model introducing a banking sector. We assume that there exist  $N_b$  banks indexed as  $l = 1, 2, \dots, N_b$ . Banks are not located on the lattice. At time  $t = 0$ , each agent is assigned to one (and only one) bank in such a way that each bank has the same number of agents connected to it (i.e. there are no ex-ante differences among banks).

As we explain in more details below, firms can produce output, consume, and save. They deposit their savings in the bank and apply for a loan when they need funds to finance their innovation and imitation activities. Finally, they are also the shareholders of the banks and receive dividends in case of profits.

### 3.1 Timeline of Events

The model is simulated across discrete time steps. We briefly sketch here the sequence of events taking place at any  $t$ , which we describe in more details in the next subsections.

1. Banks provide loans by opening credit lines to firms whose applications were positively evaluated in period  $t - 1$ . If a bank ends up with a profit at  $t - 1$  dividends are paid out;
2. Bankrupted firms at  $t - 1$  are reintroduced as miners on the island they left;
3. Miners produce, consume, save, and pay back any existing loan;
4. Banks declared bankrupt at  $t - 1$  are recapitalized by shareholders;
5. Explorers continue their journey in search of new islands, consuming a fraction of the resources deposited on their bank accounts.
6. Miners decide whether to become explorers. In case they do, and if their own resources are not enough to finance exploration, they apply for a loan;
7. Imitators continue to travel toward their destination consuming a fraction of the resources deposited on their bank accounts.

8. Miners decide whether to become imitator, and, if their own resources are not enough to finance the travel, they apply for loans;
9. Firms that run out of resources are declared bankrupt and removed from the lattice. Banks that end up with negative equity or run out of liquidity are declared bankrupt and liquidated;
10. Firms connected to a non-bankrupt bank and without outstanding loans invest a fraction of their production in the bank's capital;
11. Banks evaluate loan applications and supply the loan they decided to provide.

### 3.2 Production

At time  $t = 0$  all firms are miners and live in the initial island located at the origin of the lattice. We assume that its productivity coefficient is  $s_1 = s(0, 0) = 1$ .

More generally, a miner  $i$  located at time  $t$  on island  $j$  with coordinates  $(x_j, y_j)$  produces an output given by:

$$q_{i,t}^j = s(x_j, y_j) m_t(x_j, y_j)^{\alpha-1}, \quad (1)$$

where  $\alpha > 1$ ,  $m_t(x_j, y_j)$  is the number of miners located on island  $j$  at time  $t$ , and  $s(x_j, y_j)$  is the  $j$ 's productivity coefficient. Total production of island  $j$  is then equal to:

$$Q_t^j = s(x_j, y_j) m_t(x_j, y_j)^\alpha,$$

whereas the total output of the economy (GDP) at time  $t$  reads:

$$Q_t = \sum_j Q_t^j.$$

Firms consume a share  $c \in (0, 1]$  of their production and save the rest.<sup>3</sup>

### 3.3 Innovation

In each period  $t$ , any firm  $i$  who is currently mining on island  $j$  can decide to give up production and start exploring the lattice around  $j$ . If she does so, she becomes an explorer, leaving her current island and searching for a new one. Any miner can become an explorer during time  $t$ , independently on the others, with a constant and homogeneous probability  $\varepsilon \in [0, 1]$ .

Unlike what happened in the original model, the per-period cost of exploration  $C_{i,t}$  is now defined in terms of foregone consumption:

$$C_{i,t} = c s(x_j, y_j) m_t(x_j, y_j)^{\alpha-1},$$

---

<sup>3</sup>In the first period, agents allocate a fraction  $\gamma_2$  of their savings to create the initial equity of the bank.

where  $c \in [0, 1]$  is the share of production consumed.

Since the probability of finding an island is  $\pi$ , the expected exploration cost ( $E_i^{ex}$ ) is equal to:

$$E_i^{ex} = \frac{C_{i,t}}{\pi}. \quad (2)$$

If agent  $i$ 's savings are larger than  $E_i^{ex}$ , she starts sailing, otherwise she applies for a loan in her bank (more in Section 3.5 below).

Explorers move uniformly at random across the lattice. In each time period, they explore one (and only one) node out of the four located close to the starting node (i.e. they can only move up, down, left, or right). The new node can be either “sea” (with probability  $1 - \pi$ ) or “island” (with probability  $\pi$ ). In the first case, firm  $i$  continues to be an explorer and her searching activity goes on. In the second case, the explorer finds an island, a new technology is discovered. The explorer stops her search and becomes a miner in the newly discovered island.<sup>4</sup>

The productivity of any newly discovered island  $k$  is equal to:

$$s(x_k, y_k) = (1 + W)(|x_k| + |y_k| + \phi q_{i,t}^j + \omega), \quad (3)$$

where  $W$  is drawn from a Poisson( $\lambda$ ) and captures low-probability radical innovations;  $\omega$  is drawn from a  $N(0, 1)$  and accounts for small productivity shocks; and  $\phi \in (0, 1)$  is a parameter measuring the strength of the “memory” of the explorer. In other words, explorers carry with them the experience coming from their previous activity as miners in  $j$ . This controls for the cumulativeness of technical change. Note also that farther the island is away from the initial one (located at the origin of the lattice), the higher its expected productivity. If the explorer runs out of funds while sailing, she declares bankruptcy and comes back to the island she left.

### 3.4 Imitation

Agents can also adopt existing technologies. Miners can indeed become imitators through the process of diffusion of information about the productivity coefficient of existing islands. More specifically, in each time step each miner working on  $j$  can receive a signal from any other (currently employed) islands. The probability  $w_{j,k,t}$  of receiving a signal from island  $k \neq j$  located at  $(x_k, y_k)$  for a miner in island  $j$  is increasing in the number of miners  $m_t(x_k, y_k)$  currently working on  $k$  and exponentially decreasing with the Manhattan distance in the lattice between  $j$  and  $k$ , that is:

$$w_{j,k,t} \propto m_t(x_k, y_k) \exp\{-\rho(|x_j - x_k| + |y_j - y_k|)\}, \quad (4)$$

with  $\rho \geq 0$ .

Suppose that a miner  $i$  working on  $j$  receives  $z > 1$  signals from islands  $j_1, \dots, j_z$  different from  $j$ . Then  $i$  decides to become an imitator if:

---

<sup>4</sup>The same happens if the explorer arrives, by chance, to an already known island.

$$\max_h \{s(x_{j_h}, y_{j_h})\} > s(x_j, y_j), \quad (5)$$

that is if there exists a signal coming from another island whose productivity coefficient is strictly larger than the one currently experienced. Otherwise firm  $i$  keeps producing on island  $j$ . The island  $j^*$ , located at  $(x_{j^*}, y_{j^*})$ , which maximizes the lhs of (and satisfies) Eq. (5) is the technology adopted by  $i$ .<sup>5</sup>

Imitation takes time and is a costly (but certain) activity. Firm  $i$  takes exactly  $|x_j - x_{j^*}| + |y_j - y_{j^*}|$  time steps before starting to produce as a miner on  $j^*$  (i.e., they move towards  $j^*$  one step per time period, following the shortest path in the lattice).

Unlike in the exploration case, the per-period cost of sailing  $C^{im}$  is now certain, as imitation is a safe activity. It reads:

$$C_i^{im} = [c s(x_j, y_j) m_t(x_j, y_j)^{\alpha-1}] (|x_j - x_{j^*}| + |y_j - y_{j^*}|). \quad (6)$$

If firm  $i$  savings are not enough, she tries to get credit from her bank.<sup>6</sup>

### 3.5 Banks and Credit

As mentioned above, we extend the original FDM introducing a banking sector in the economy. Miners can apply for a loan to their bank to explore or imitate. We assume that each bank  $l$  holds a total supply of credit  $L_{l,t}^{sup}$  defined as:

$$L_{l,t}^{sup} = \frac{Eq_{l,t}}{\chi} - L_{l,t},$$

where  $Eq_{l,t}$  is bank equity,  $0 \leq \chi \leq 1$  is the minimum capital requirement, and  $L_{l,t}$  is the stock of loans of the bank.

As credit market is characterized by imperfect information (see e.g. Stiglitz and Weiss, 1981), banks do not know if the requested loan will finance an imitation journey or a riskier exploration venture. As a consequence, banks simply allocate credit to applicants ranking them with respect to their loan-savings ratio in ascending order, until the bank has resources to fully satisfy a client's application. Note that some firms may end up being credit rationed. Finally, the bank charges an homogeneous interest rate  $r > 0$  to every client.

Firms who want to become explorers or miners and got their loan application accepted start traveling. During each traveling time step, agents withdraw the per-period consumption from their bank.

If they succeed in reaching an new island or their target for adoption, they become miners there and start paying back their loans (plus the interests) using the savings they are able to generate.

---

<sup>5</sup>In case of multiple maxima, miner  $i$  chooses one of them at random.

<sup>6</sup>We assume that the per period share of production  $c$  consumed for imitation equals that for exploration.

Firms can go bankrupt during exploration. In that case, the bank faces a loss and decreases its equity by the amount of the loan provided to the explorer. If bank's equity becomes negative, then the bank goes bankrupt. If a failed bank has any remaining liquidity, it will distribute it first to the depositors according to their net position,<sup>7</sup> then to shareholders according to their capital share. Then, in the next period, a new bank is created with the capital provided by the old shareholders. More specifically, each agent bestows a fraction  $\gamma_2$  of her savings to the new bank. As there are costs in creating the new bank, only a fraction  $0 \leq \zeta < 1$  of the new resources form its equity.

At the end of any time step, banks may obtain profits. In that case, a fraction  $\xi$  of profits are distributed to the shareholders as dividends. The rest will increase the equity of the bank. Finally, miners who do not have any outstanding debt transfer a fraction  $\gamma_1 \in (0, 1]$  of their savings to increase the equity of the bank.

## 4 Simulation Results

As it happens almost always with stochastic, agent-based, dynamic systems, the model described above does not have a closed-form analytical solution for the probability distributions of its long-run states. Therefore, simulations are required to get quantitative insights on the statistical behavior of the model.

We start from a baseline parametrization of the model, for which we generate a sample of 3000 Monte Carlo (MC) replications. Such a sample size has been selected so as to ensure convergence of MC moments for the distributions of the statistics of interest.<sup>8</sup>

The baseline parametrization, reported in Table 1, has been chosen so as to replicate a benchmark setup of the original FDM. In particular, the parameters  $(\epsilon, \phi, \pi, \rho, \lambda, \alpha)$ , as well as the population size  $N$ , have been all set according to a high-growth scenario of the FDM (without banks). Parameters not featured in the FDM, whenever possible, are set so as to mimic their real-world counterparts. For example, the value for  $\gamma_2$  tries to capture a naive diversification strategy by agents unable to correctly forecast the variance-covariance matrix when trading off bank capital and deposits upon bank birth. Similarly, the value for  $\chi$  is set in line with Basel II requirements.

In what follows, we first study whether in the baseline parametrization the time series of aggregate output generated simulating the model display statistical properties found in real GDP data. Then, we explore departures from the baseline parametrization. This allows us to investigate the impact of banks and credit on the long-run growth of the economy. Finally, we

---

<sup>7</sup>We define net position as the difference between agent's deposit and outstanding loan. If liquidity is not enough to satisfy depositors, then it is distributed proportionally to net positions. A firm with negative net position does not receive anything.

<sup>8</sup>All our results do not significantly change if one increases Monte Carlo sample sizes. Extensive tests show that the MC distributions of the statistics of interest are sufficiently symmetric and unimodal. Thus we can use MC sample averages to get meaningful synthetic indicators.

Table 1: Baseline Parametrization.

Parameter	Value	Description
$T$	500	Number of time periods in each run
$N_f$	100	Number of agents
$N_b$	5	Number of banks
$\pi$	0.1	Probability that a node is an island
$\phi$	0.5	Strength of cumulative learning effect
$\lambda$	1	Intensity of high productivity jumps
$\alpha$	1.5	Returns to scale parameter
$\rho$	0.1	Degree of locality of signals
$\varepsilon$	0.1	Probability that a miner becomes an explorer
$c$	0.7	Share of production consumed
$\gamma_1$	0.01	Share of savings invested in banks' equity
$\gamma_2$	0.5	Share of savings devoted to create a new bank
$\chi$	0.1	Minimum capital requirement
$r$	0.1	Baseline interest rate
$\zeta$	0.1	Bank set-up costs
$\xi$	0.15	Share of banks' profits paid as dividends

analyze the possible non-linear relationships between financial depth and growth.

## 4.1 Empirical Validation

We begin considering the aggregate-output time series generated by a typical simulation run under the baseline parametrization defined above.<sup>9</sup> Figure 1 shows that the model is able to account for endogenous self-sustaining growth (in line with Fagiolo and Dosi, 2003). We then study whether aggregate-output time series display statistical properties akin to those exhibited by empirically-observed GDP time series. More specifically, we ask whether: (i) the log of aggregate-output time series is integrated of order 1; (ii) output growth-rate series are stationary with positive and fast-decaying autocorrelations of output growth rates; (iii) aggregate-output fluctuations are persistent.

In order to test for non-stationarity of aggregate output and stationarity of its growth rates, we perform a battery of augmented Dickey-Fuller (ADF) tests on each time series of the simulated Monte Carlo sample. For each test performed, we record whether the null hypothesis of unit root is rejected (or not), setting the significance level (alpha) at 5%. We find that, in the baseline parametrization, aggregate-output time series are integrated of order 1 and difference-stationary. Indeed, the frequency of acceptance of ADF tests performed on the log of aggregate output ranges between 94% (in the case a drift is introduced in the test specification) and 100% (when neither a drift nor a trend is included). Conversely, no matter the ADF test specification, the ADF test is always rejected for simulated time series of output growth rates.

<sup>9</sup>For a critical discussion of empirical validation of agent-based models, see Fagiolo et al. (2017).

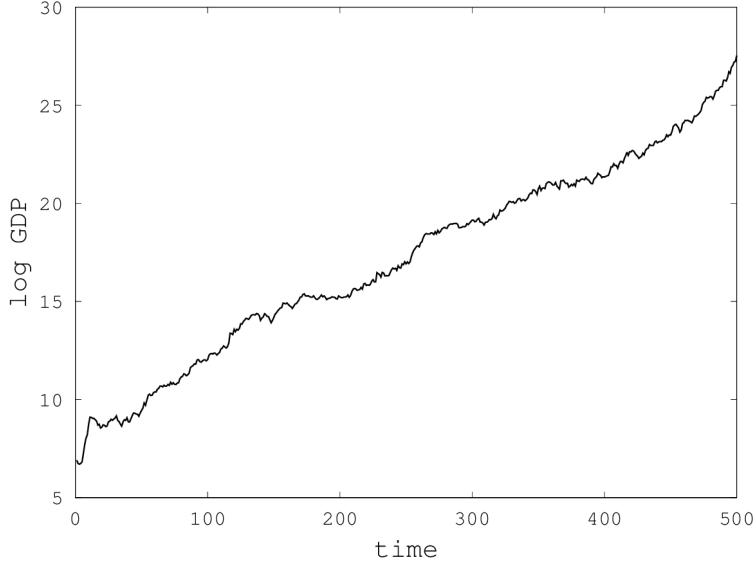


Figure 1: Representative time series of log GDP ( $\log(Q_t)$ ) generated by the model under the baseline parametrization in Table 1.

We turn now to analyzing the autocorrelation patterns displayed by the growth rates of aggregate output. Figure 2 plots MC averages of the autocorrelation function, which we have separately estimated in each Monte Carlo run. In line with the empirical evidence (Cochrane, 1988), autocorrelations are positive for the first lags and then they fast decay to values not significantly different from zero —according to Bartlett bands.

Finally, we consider the non-parametric measures  $\hat{V}^k$  and  $\hat{A}^k(1)$  of persistence in output fluctuations used in Campbell and Mankiw (1989) and Cochrane (1988),<sup>10</sup> defined as:

$$\hat{V}^k = \frac{T-k}{T} \left[ 1 + 2 \sum_{j=1}^k \left( 1 - \frac{j}{k+1} \right) r_j \right],$$

where  $r_j$  is the lag  $j$  sample estimate of the autocorrelation function, and

$$\hat{A}^k(1) = \sqrt{\frac{\hat{V}^k}{1 - r_1^2}}.$$

Table 2 shows the MC averages and standard errors of the two statistics computed over our artificial sample. The estimates are significantly larger than one for every time-horizon considered, confirming that the model is able to produce aggregate-output fluctuations with persistence levels similar to those observed in real-world GDP data.

The foregoing results suggest that, at least in the baseline parametrization, the model is able to generate aggregate-output time series that are statistically not distinguishable from their real-world counterpart. A similar conclusion holds, in general, whenever the model is

---

<sup>10</sup>see Fagiolo and Dosi (2003) for more details

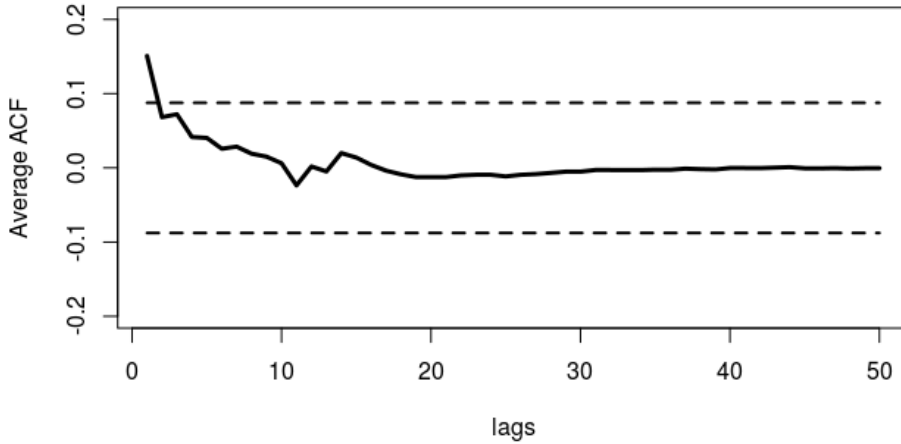


Figure 2: MC average growth rate autocorrelation function. Dotted lines are 95% Bartlett confidence bands. Monte Carlo sample: 3000 replications.

	$K = 10$	$K = 20$	$K = 30$	$K = 40$	$K = 50$
$\hat{V}^k$	1.616448 (0.006743)	1.706264 (0.009113)	1.670570 (0.010663)	1.613766 (0.011879)	1.563051 (0.012843)
$\hat{A}^k(1)$	1.281972 (0.002891)	1.311785 (0.003691)	1.292527 (0.004266)	1.264568 (0.004755)	1.239006 (0.005156)

Table 2: MC averages of the estimated  $\hat{V}^k$  and  $\hat{A}^k(1)$  with standard errors in parenthesis. Monte Carlo sample: 3000 replications.

able to produce self-sustaining endogenous growth. This happens —as in the original model— for quite a large subset of the whole parameter space. As discussed in Fagiolo and Roventini (2017), the fact that an agent-based model is empirically validated for a non-trivial subset of all its possible parameter constellations is a necessary prerequisite to subsequently ask what-if type of questions and to perform economic policy exercises.

## 4.2 The Impact of Credit on Output Growth and Volatility

We begin asking whether introducing banks in the FDM has a positive impact on aggregate output. We study two setups, one with banks providing credit to firms and the other without banks, i.e. a sort of ‘autarkic’ setting where firms can rely only on their cumulated cash flows to finance innovation and imitation activities.

We compare the performance of the simulated economy in the two setups. We focus on the behavior of (the log of) aggregate output time series, as well growth-rate output volatility. To measure volatility, we build the time series of the standard deviation of aggregate-output



growth rates in the 100 periods preceding the current time step  $t$ , i.e.:

$$\sigma_t^{100}(g) = \sqrt{\sum_{\tau=0}^{99} \frac{(g_{t-\tau} - \mu_t^{100}(g))^2}{100}}, \quad (7)$$

where  $g_t = \log Q_t - \log Q_{t-1}$  and  $\mu_t^{100}(g) = (\log Q_t - \log Q_{t-100})/100$ .

The results of our experiments are presented in Figure 3. We observe that the presence of a banking sector allows for higher growth and lower volatility. This is so because, in the model, growth stems from a right balance between the resources devoted to producing by exploiting the current set of technologies, introducing new techniques and diffusing the new technologies. The credit activity of banks removes the resource constraint preventing agents to discover new technologies and imitate better ones. This in turn puts the economy on a virtuous growth path. The growth-enhancing effect of credit is particularly relevant in the first phases of economic development, when firms need to accumulate enough resources to start exploring the technological space (see the left panel of Figure 3). The discovery of more productive islands allows for imitation and this induces the diffusion of better technologies and faster growth. Even after the economy stabilizes on a steady growth path, the output gap between the scenario with banks and the ‘autarkic’ setup keeps on increasing, suggesting that the resource constraint does affect firms when the financial sector is not present.

Let us now consider the impact of banks and credit on output volatility. Figure 3 shows that volatility is typically high in the first periods of the simulation, and then quickly converges to its long-run stable value. This points out that the model gets out of its transient phase quite fast and then reaches its long-run stable growth pattern. The presence of banks appears to reduce output volatility. Again, the positive influence of the credit sector stems from the delicate balance between exploration and exploitation, together with the possible emergence of coordination failures. Indeed, when a firm leaves her island, production falls, and output can increase again only when a new (highly-productive) island is discovered. If agents move in a coordinated way, a huge drop in output will be followed by spurs of growth when new technologies are discovered and diffused. Banks break such a vicious cycle allowing agents to leave their island smoothly without the accumulation of the resources otherwise needed in the ‘autarkic’ scenario.

### 4.3 Financial Depth, Output Growth, and Volatility

The foregoing first set of experiments suggests that credit and banks have a positive impact on growth. This in line with many empirical works (King and Levine, 1993a; Rajan and Zingales, 1998; Levine et al., 2000; Beck et al., 2000).

A natural subsequent question is whether increasing levels of financialization are always beneficial for growth, or if instead they might harm the economy and, when financialization

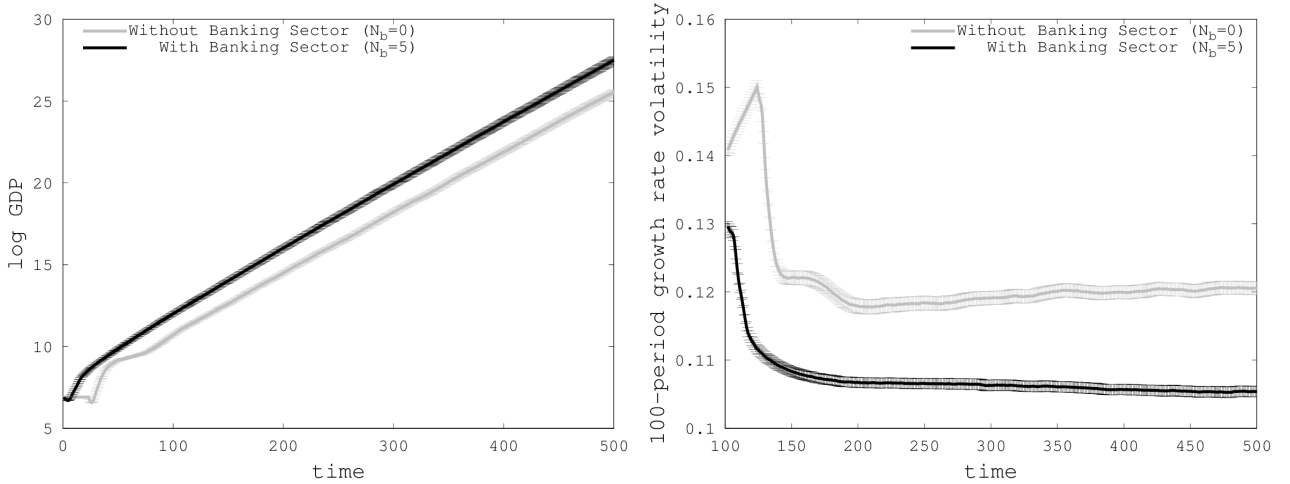


Figure 3: MC averages of log GDP and 100-period growth rate volatility with and without banking sector. Confidence bands are set to three standard errors away from Monte Carlo sample averages.

becomes too strong, can possibly trigger crises. In fact, non-linear relationships in the finance-growth nexus have been recently found by several studies. For example, Cecchetti and Kharroubi (2012); Law and Singh (2014); Arcand et al. (2015) all suggest that the positive effects of finance tend to vanish after some point, and can even become detrimental as the level of financial depth increases and goes beyond some thresholds.

In the next experiments, we will explore with our model the existence of non-linearities in the relationship between finance and growth. We define financial depth—in line with existing literature (see e.g. Arcand et al., 2015)—as the amount of outstanding loans over production:

$$FD_t = \frac{\sum_{l=1}^{N_b} L_{l,t}}{Q_t}. \quad (8)$$

Since loans provided in the current period may take several time steps to affect growth, we consider its 10-year average:

$$\overline{FD}_t^{10} = \frac{\sum_{\tau=0}^9 FD_{t-\tau}}{10}. \quad (9)$$

In our regression exercises, the dependent variable is the 10-year output growth rate, defined as:

$$G_t^{10} = \log(Q_t) - \log(Q_{t-10}). \quad (10)$$

To avoid any possible endogeneity issue, we use as a covariate the average financial depth with a ten-year lag (i.e.  $\overline{FD}_{t-10}^{10}$ ), together with its square.

We build a Monte Carlo sample considering 3000 independent runs, wherein we record  $\overline{FD}_t^{10}$  and  $G_t^{10}$  for the last 300 periods of the simulations to avoid any possible transient behaviors.

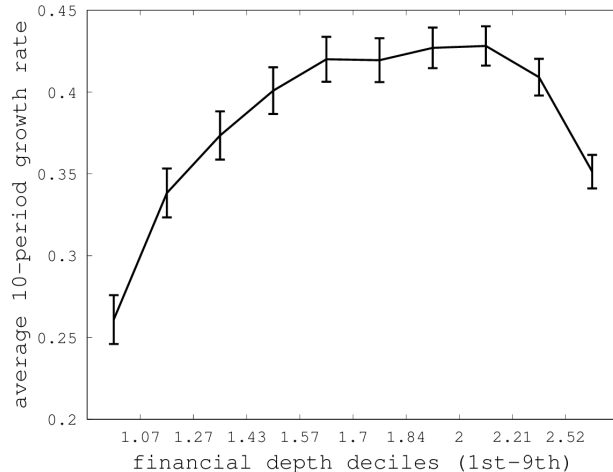


Figure 4: MC average of  $G_t^{10}$  for the different subsamples generated by the deciles of  $\overline{FD}_{t-10}^{10}$  under the parametrization in Table 1. Confidence bands are set to three standard errors away from Monte Carlo sample averages.

In this way, we have a balanced panel of  $29 \times 3000$  observations.

To begin with, we graphically explore the links between financial depth and GDP growth considering the unconditional relationship between the deciles of the average financial depth pooled distribution, and the corresponding average 10-year GDP growth rate. Results are summarized in Figure 4. In line with the empirical literature (Cecchetti and Kharroubi, 2012; Law and Singh, 2014; Arcand et al., 2015), 10-period output growth presents an inverted-U shaped relation with respect to financial depth. Indeed, until the fifth decile, financial depth spurs output growth. Then the relation stabilizes, but for higher financial-depth levels finance harms the long-run performance of the economy.

We now explore a conditional model to better understand the relationship between financial depth and growth. We employ our balanced panel to run fixed-effect regressions of growth rates on average financial depth and average financial depth squared (as in Arcand et al., 2015).

More specifically, the simple econometric model that we estimate reads:

$$G_{n,t}^{10} = \beta_0 + \beta_1 \overline{FD}_{n,t-10}^{10} + \beta_2 \left( \overline{FD}_{n,t-10}^{10} \right)^2 + a_n + u_{n,t}, \quad (11)$$

where the subscript  $n$  denotes the Monte Carlo replication;  $a_n$  captures a Monte Carlo run-specific effect; and  $u_{n,t}$  is the time  $t$  error term for run  $n$ .

Regression results are reported in table 3. The results of the econometric exercise confirm the existence of a non-linear, inverted-U shaped relationship between financial depth and growth.

The underlying mechanism that drives this result is again linked to the dynamic solution of the exploration-exploitation trade-off. When banks provide a relatively small amount of loans, the economic growth is weak as agents may not hold the necessary resources to innovate. Thus, increasing the loan-over-output ratio spurs growth via higher innovation rates and faster

	<i>Dependent variable: <math>G_{n,t}^{10}</math></i>		
	(1)	(2)	(3)
$\overline{FD}_{n,t-10}^{10}$	0.3207*** (0.0106)	0.3441*** (0.0106)	0.3441*** (0.0106)
$(\overline{FD}_{n,t-10}^{10})^2$	-0.0635*** (0.0026)	-0.0670*** (0.0026)	-0.0671*** (0.0026)
$\overline{ta}_{n,t-10}^{b,10}$		-0.5321*** (0.0192)	-0.5373*** (0.0612)
$\overline{ta}_{n,t-10}^{b,10} \times \overline{FD}_{n,t-10}^{10}$			0.0028 (0.0307)
Constant	0.0368*** (0.0104)	0.0412*** (0.0104)	0.0414*** (0.0105)
Observations ( $T \times N$ )	$29 \times 3000$	$29 \times 3000$	$29 \times 3000$
R <sup>2</sup>	0.076	0.084	0.084
Adjusted R <sup>2</sup>	0.041	0.052	0.052
F Statistic	2.298*** (df = 3001, 83998)	2.575*** (df = 3002, 83997)	2.574*** (df = 3003, 83996)

Table 3: Estimates of the econometric model with standard errors in parenthesis. \*\*\* stands for p-value < 0.01, \*\* stands for p-value < 0.05, \* stands for p-value < 0.1.

technological diffusion. However, as credit keeps on increasing, the higher financialization of the economy fuels the “animal spirits” of the firms. This wastes an excessive amounts of resources in unfruitful exploration instead of producing more output using existing techniques. This in turn slows down output growth.

This intuition is corroborated by the results obtained tuning the parameter governing the propensity to explore ( $\epsilon$ ) of the agents. Indeed, as Figure 5 shows, for lower levels of  $\epsilon$ , the positive effects of bank credit is stronger, whereas for higher propensity to explore, a large banking sector fuels over-exploration and output growth falls almost to the autarky scenario. Relatedly, the effects of financial depth on output growth becomes increasingly negative as agents are more willing to explore.

Finally, we investigate whether the occurrence of banking crises could be the cause of the negative marginal effect of high values of financial depth on GDP growth. Indeed, when banks lend too much, they become more and more fragile and their bankruptcy risk increases. Since the failure of a bank reduces the amount of available resources for exploration and imitation activities, output growth can slow down.

We control for banking crises by adding the size of bankruptcies as a control when estimating Equation (11). More specifically, we consider the ratio between the total amount of assets of bankrupted banks ( $TA_t^b$ ) and output:

$$ta_t^b = \frac{TA_t^b}{Q_t}.$$

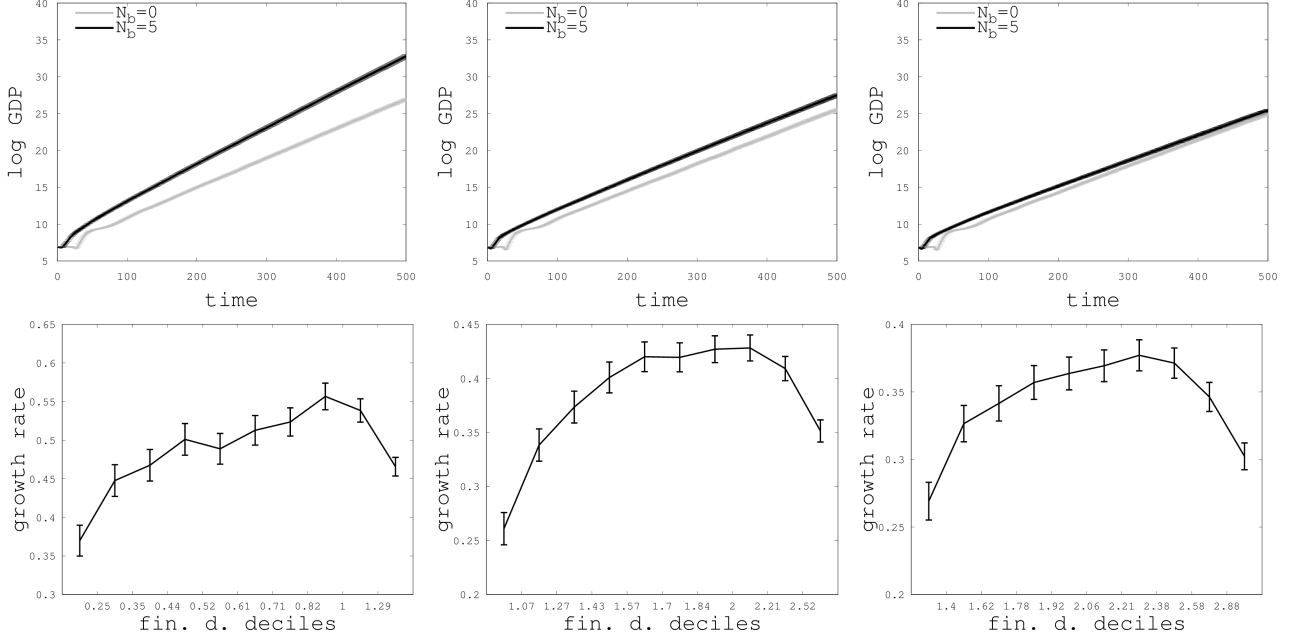


Figure 5: Propensity to explore parameter  $\epsilon$  and economic dynamics. Left: low,  $\epsilon = 0.05$ . Mid: baseline,  $\epsilon = 0.1$ . Right: high,  $\epsilon = 0.12$ . Top: MC average of log GDP with a banking sector ( $N_b = 5$ ) and without ( $N_b = 0$ ). Bottom: MC average of  $G_t^{10}$  for the different subsamples generated by the deciles of  $\overline{FD}_{t-10}^{10}$ . Confidence bands are set as three standard errors away from Monte Carlo sample averages.

Thus we add to the regression its 10-year average, in order to keep consistency with the econometric model in (11):

$$\overline{ta}_t^{b,10} = \frac{\sum_{\tau=0}^9 ta_{t-\tau}^b}{10}.$$

We also control for possible interaction effects repeating the estimation with the product between  $\overline{ta}_{t-10}^{b,10}$  and  $\overline{FD}_{n,t-10}^{10}$  among the regressors.

We find that the estimates of financial-depth coefficients do not basically change (cf. Table 3), while the one related to banking crises is negative and significant. Bank bankruptcies exerts a negative effect on future output growth rates, but they cannot explain the non-linear relationship between financial depth and output. This is in line with the findings of Arcand et al. (2015) about the robustness of the inverted-U shaped relation between the two variables has to financial instability.

#### 4.4 Innovation and Credit

Is there any interaction between the technological engine of the model and the amount of fuel provided by bank credit? In order to further explore the connection between innovation and credit, we investigate how our results change when different credit and technical-change

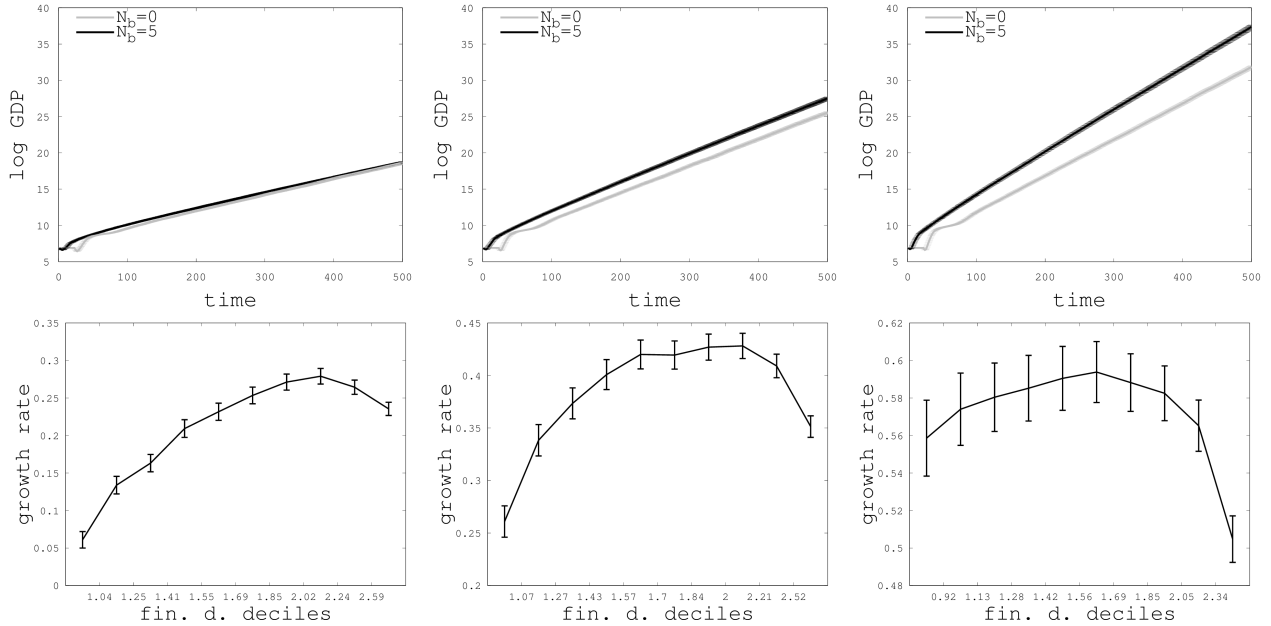


Figure 6: Productivity scenarios. Left: low,  $\phi = 0.3$  and  $\lambda = 0.5$ . Mid: baseline  $\phi = 0.5$  and  $\lambda = 1$ . Right: high,  $\phi = 0.7$  and  $\lambda = 2$ . Top: MC average of log GDP with a banking sector ( $N_b = 5$ ) and without ( $N_b = 0$ ). Bottom: MC average of  $G_t^{10}$  for the different subsamples generated by the deciles of  $\overline{FD}_{t-10}^{10}$ . Confidence bands are set as three standard errors away from Monte Carlo sample averages.

parameter constellations are considered.<sup>11</sup>

*Technical change.* Let us begin with tuning the parameters related to the productivity of the newly discovered innovations, the technological opportunities, and the rate of technological diffusion in the economy. For higher levels of innovation cumulativeness ( $\phi$ ) and occurrence of radical innovations ( $\lambda$ ), the presence of banks further spurs output growth (see Figure 6). Indeed, in high-productivity scenarios, agents can pay back their debt in fewer periods after they reach a new island. This reduces the risk faced by banks and endow them with more resources for the next exploration phase. In turn, it becomes easier for the banking sector to set the economy on a virtuous combination of exploration and exploitation, and increase output growth. The inverted-U shaped relation between growth and financial depth persists. However, in the high-productivity scenario, it becomes flatter, with the turning point shifting leftward. Furthermore, deeper output drops are observed for highest values of financialization (cf. Figure 6). This is because, in such a setup, only a fair amount of external finance is needed to maximize growth.

When the probability of discovering a new technology increases ( $\pi$ ) —i.e., there are higher innovation opportunities— the banking sector becomes less and less relevant in supporting output growth (see Figure 7). Higher technological opportunities lessen the amount of R&D

<sup>11</sup>Such an exercise can also be considered as a preliminary —and admittedly very partial— sensitivity analysis of the model. Indeed, we test the robustness of our findings when the value of one or two parameters is changed keeping all the other parameters as in the baseline parameterization of Table 1.

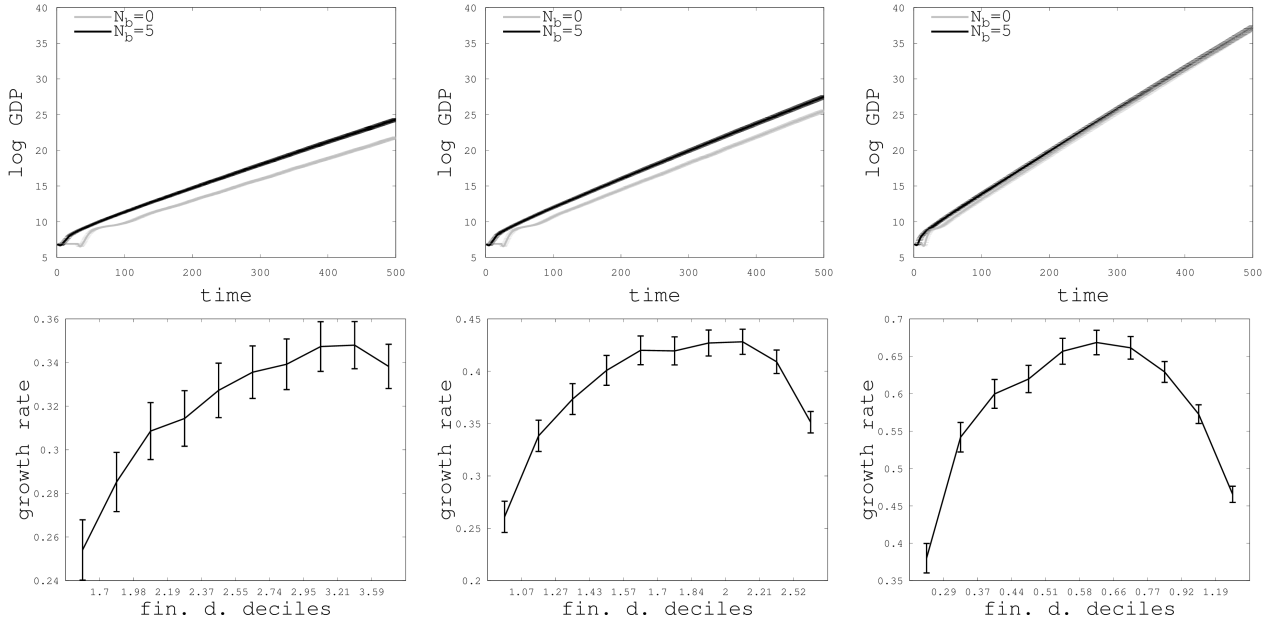


Figure 7: Innovation opportunities. Left: low,  $\pi = 0.075$ . Mid: baseline,  $\pi = 0.1$ . Right: high,  $\pi = 0.2$ . Top: MC average of log GDP with a banking sector ( $N_b = 5$ ) and without ( $N_b = 0$ ). Bottom: MC average of  $G_t^{10}$  for the different subsamples generated by the deciles of  $\overline{FD}_{t-10}^{10}$ . Confidence bands are set as three standard errors away from Monte Carlo sample averages.

investment required to innovate, thus relaxing firm financial constraints. This is confirmed by the relation between financial depth and growth: when opportunities are high, the inverted-U shape is more marked and the negative effects of increasing financialization emerge earlier.

Finally, we investigate technological diffusion occurring in the model via imitation activities carried out by the firms. To do so, we tune the parameter  $\rho$  in order to consider different scenarios for the diffusion of information in the economy. Recall that the higher  $\rho$ , the more information is locally diffused, as the probability of receiving a signal decays faster around the island from which it originates.

If technological diffusion is more globally diffused (small  $\rho$ 's), the positive long-run impact of finance becomes more evident, as agents need resources to imitate (cf. Figure 8). However, the detrimental marginal effect of an hypertrophic financial sector increases with higher technological diffusion. Indeed, when imitation is more local (large  $\rho$ 's), the economy needs more technological exploration to sustain growth. When diffusion is instead more global, only few new discoveries are needed and the economy ends up quicker in over-exploration.

*Banking activity.* We now investigate how simulation results change when different policy scenarios concerning the banking system are considered. More specifically, we focus on the stringency of macro-prudential regulations and the interest rate, two parameters usually fixed by central banks or financial authorities.<sup>12</sup>

<sup>12</sup>We also tested how the economy reacts to: (i) changes in bank set-up costs; (ii) number of banks; and (iii) a more conservative pecking order rule wherein imitators receive credit explorers and loans are cheaper for

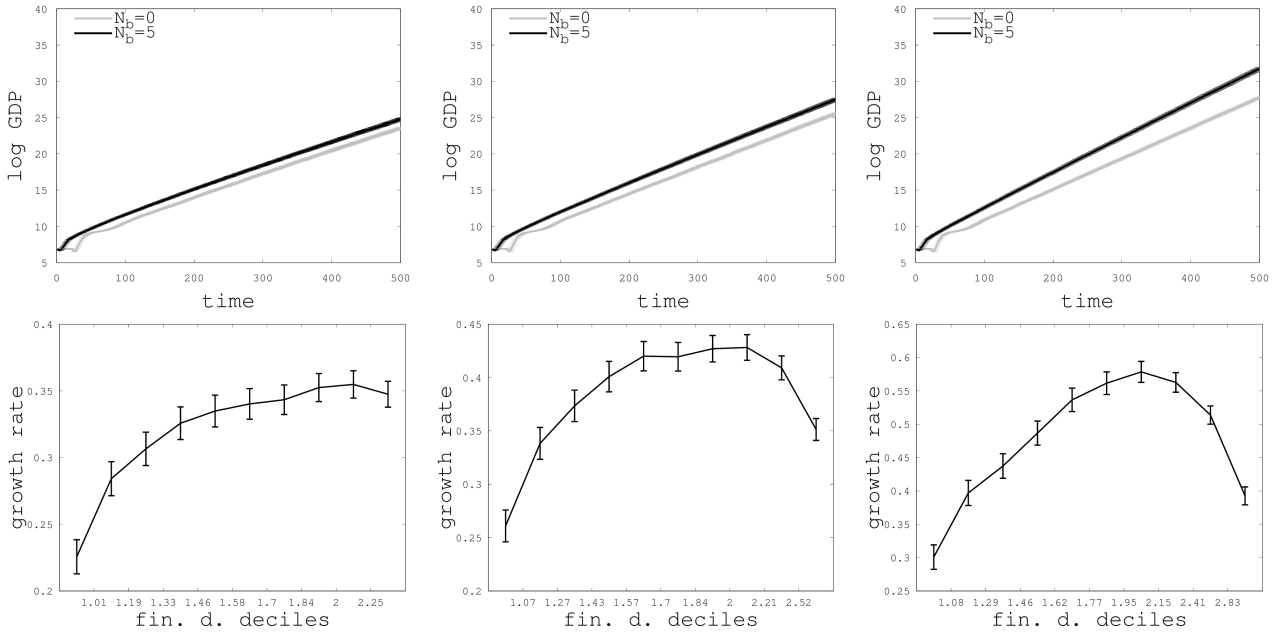


Figure 8: Technological diffusion. Left: local,  $\rho = 0.15$ . Mid: baseline,  $\rho = 0.1$ . Right: global,  $\rho = 0.01$ . Top: MC average of log GDP with a banking sector ( $N_b = 5$ ) and without ( $N_b = 0$ ). Bottom: MC average of  $G_t^{10}$  for the different subsamples generated by the deciles of  $\overline{FD}_{t-10}^{10}$ . Confidence bands are set as three standard errors away from Monte Carlo sample averages.

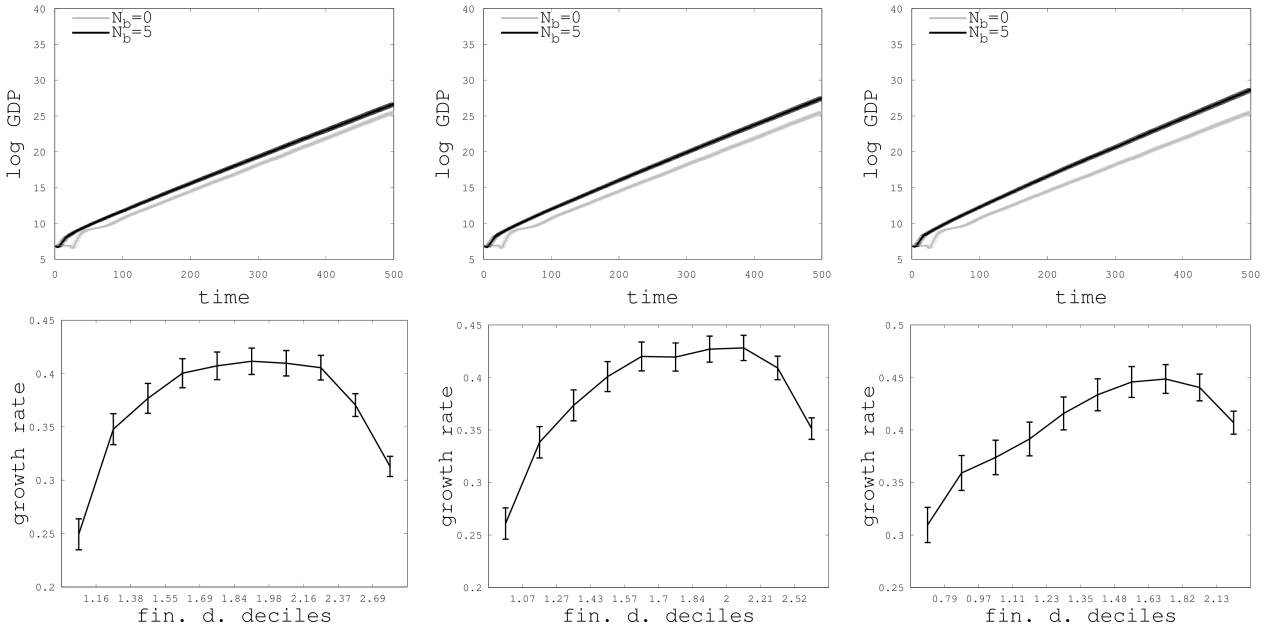


Figure 9: Minimum capital requirement. Left: low,  $\chi = 0.05$ . Mid: baseline,  $\chi = 0.1$ . Right: high,  $\chi = 0.2$ . Top: MC average of log GDP with a banking sector ( $N_b = 5$ ) and without ( $N_b = 0$ ). Bottom: MC average of  $G_t^{10}$  for the different subsamples generated by the deciles of  $\overline{FD}_{t-10}^{10}$ . Confidence bands are set as three standard errors away from Monte Carlo sample averages.



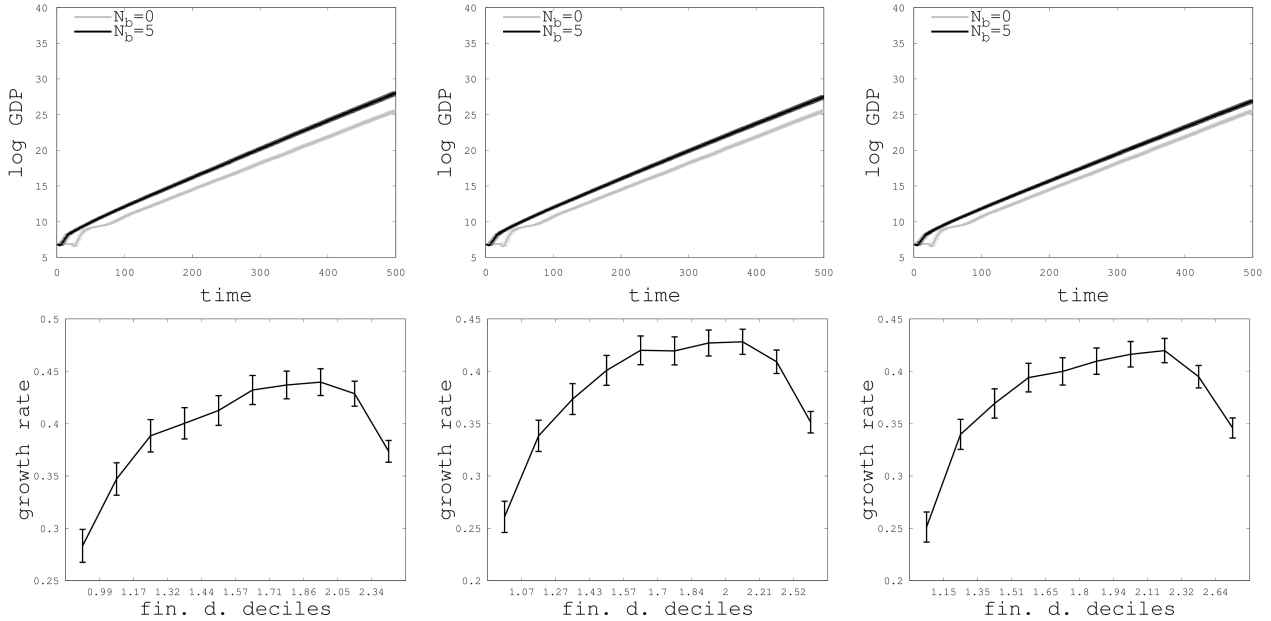


Figure 10: Interest rate. Left: low,  $r = 0.05$ . Mid: baseline,  $r = 0.1$ . Right: high,  $r = 0.15$ . Top: MC average of log GDP with a banking sector ( $N_b = 5$ ) and without ( $N_b = 0$ ). Bottom: MC average of  $G_t^{10}$  for the different subsamples generated by the deciles of  $\overline{FD}_{t-10}^{10}$ . Confidence bands are set as three standard errors away from Monte Carlo sample averages.

More stringent macro-prudential regulations are obtained in the model increasing the minimum capital requirement  $\chi$ . Results show that increasing  $\chi$  has a positive impact on long-run growth (see Figure 9). Indeed, restraining credit supply reduces the possibility of over-exploration, thus reinforcing the balance sheets of banks. This is also confirmed by the relation between financial depth and growth.

The economy is instead less reactive to changes in the interest rate ( $r$ ). This is probably because, on the one hand, higher interest rates extend the period required by firm to pay back their debt, reducing the long-run output level. However, this effect is counterbalanced by the fact that firm innovation and imitation decisions in the model do not rely upon the interest rate.

## 5 Conclusions

In this paper, we have investigated the interactions between innovation, credit and growth in a supply-side model of industry dynamics. To do so, we have introduced a banking sector in the endogenous-growth agent-based model developed in Fagiolo and Dosi (2003). We have explicitly taken into account the effects that finance has on innovation and imitation activities

---

imitation than they are for exploration. Overall, our results are robust and consistent with the effect of credit on the exploration-exploitation trade-off. For this reason we do not report such analyses, which are nevertheless available from the Authors upon request.

of firms, as well as on the long-run performance of the economy.

Simulation results show that banks, by providing loans, are able to foster technological innovation and diffusion, thus improving long-run economic growth. Credit allows indeed to achieve a better balance between the technological exploration and exploitation activities of firms. However, credit and technical change co-evolve with possibly non-linear effects. In line with the empirical evidence (Cecchetti and Kharroubi, 2012; Law and Singh, 2014; Arcand et al., 2015), we find an inverted U-shaped relationship between financial depth and output growth. When firms do not search enough for new technologies, increasing the relative amount of loans results in higher innovation and faster technological diffusion, thus spurring GDP growth. However, excessive levels of credit sustain the animal spirits of firm engaged in unfruitful exploration undermining production and savings.

Overall, this suggests that the interaction between innovation and finance may play a more fundamental role in fueling growth than previously thought.

The current model could be extended in several ways. First, one could endogeneize the formation of links between banks and firms. In the basic version of the model, we exogenously select bank-firm links once and for all before simulations start. Instead, one could allow firm to strategically switch among different banks or to hold multiple credit lines.

Second, an interbank lending market could be introduced in order to allow banks to extend loans to one another for a number of time steps.

Finally, on the policy side, one could study the impact of more sophisticated macro-prudential regulation and the role of patient finance, introducing, e.g., a public investment bank.

## Acknowledgments

G.F., D.G. and A.R. gratefully acknowledge support by the European Union’s Horizon 2020 research and innovation program under grant agreement No. 640772-DOLFINS. G.F. and A.R. gratefully acknowledge support by the European Union’s Horizon 2020 research and innovation program under grant agreement No. 649186-ISIGrowth. Thanks to Marina Mastrorillo, Tommaso Ferraresi, and Delio Panaro for their contribution to the development of the ideas behind this version of the model.

## References

- Acemoglu, D. and F. Zilibotti (1997). Was prometheus unbound by chance? risk, diversification, and growth. *Journal of political economy* 105(4), 709–751.
- Allen, F. and D. Gale (1997). Financial markets, intermediaries, and intertemporal smoothing. *Journal of political Economy* 105(3), 523–546.
- Arcand, J. L., E. Berkes, and U. Panizza (2015). Too much finance? *Journal of Economic Growth* 20(2), 105–148.

- Arribas, I., J. Peiró-Palomino, and E. Tortosa-Ausina (2017). Is full banking integration desirable? *Journal of Banking & Finance*, In Press.
- Bagehot, W. (1873). *Lombard Street: A description of the money market*. Scribner, Armstrong & Company.
- Beck, T., B. Büyükkarabacak, F. K. Rioja, and N. T. Valev (2012). Who gets the credit? and does it matter? household vs. firm lending across countries. *The BE Journal of Macroeconomics* 12(1).
- Beck, T. and R. Levine (2004). Stock markets, banks, and growth: Panel evidence. *Journal of Banking & Finance* 28(3), 423–442.
- Beck, T., R. Levine, and N. Loayza (2000). Finance and the sources of growth. *Journal of financial economics* 58(1), 261–300.
- Bencivenga, V. R. and B. D. Smith (1993). Some consequences of credit rationing in an endogenous growth model. *Journal of Economic Dynamics and Control* 17(1-2), 97–122.
- Benczur, P., S. Karagiannis, and V. Kvedaras (2017). Finance and economic growth: financing structure and non-linear impact. Technical report, Joint Research Centre, European Commission (Ispra site).
- Bodenhorn, H. (2016). Two centuries of finance and growth in the united states, 1790-1980. Technical report, National Bureau of Economic Research.
- Boyd, J. H. and E. C. Prescott (1986). Financial intermediary-coalitions. *Journal of Economic Theory* 38(2), 211–232.
- Campbell, J. Y. and N. G. Mankiw (1989). International evidence on the persistence of economic fluctuations. *Journal of Monetary Economics* 23(2), 319–333.
- Capolupo, R. (2017). Finance, investment and growth: Evidence for italy. *Economic Notes*, In Press.
- Cecchetti, S. G. and E. Kharroubi (2012). Reassessing the impact of finance on growth. BIS Working Papers 381, Bank for International Settlements.
- Cecchetti, S. G. and E. Kharroubi (2015). Why does financial sector growth crowd out real economic growth? BIS Working Papers 490, Bank for International Settlements.
- Cochrane, J. H. (1988). How big is the random walk in gnp? *Journal of political economy* 96(5), 893–920.
- De la Fuente, A. and J. Marín (1996). Innovation, bank monitoring, and endogenous financial development. *Journal of Monetary Economics* 38(2), 269–301.
- Dosi, G. (1988). Sources, procedures, and microeconomic effects of innovation. *Journal of economic literature* 26, 1120–1171.
- Dosi, G., G. Fagiolo, M. Napoletano, and A. Roventini (2013). Income distribution, credit and fiscal policies in an agent-based keynesian model. *Journal of Economic Dynamics and Control* 37(8), 1598–1625.

- Dosi, G., G. Fagiolo, M. Napoletano, A. Roventini, and T. Treibich (2015). Fiscal and monetary policies in complex evolving economies. *Journal of Economic Dynamics and Control* 52, 166–189.
- Dosi, G., G. Fagiolo, and A. Roventini (2010). Schumpeter meeting Keynes: A policy-friendly model of endogenous growth and business cycles. *Journal of Economic Dynamics and Control* 34(9), 1748–1767.
- Dosi, G. and D. Lovullo (1997). *Rational entrepreneurs or optimistic martyrs? Some considerations on technological regimes, corporate entries, and the evolutionary role of decision biases*. Cambridge, UK: Cambridge University Press.
- Dosi, G. and R. Nelson (1994). An introduction to evolutionary theories in economics. *Journal of Evolutionary Economics* 4, 153–172.
- Dosi, G. and R. R. Nelson (2010). Technological change and industrial dynamics as evolutionary processes. In B. H. Hall and N. Rosenberg (Eds.), *Handbook of the Economics of Innovation*, Chapter 4. Elsevier: Amsterdam.
- Epstein, G. A. (2005). *Financialization and the world economy*. Edward Elgar Publishing.
- Fagiolo, G. and G. Dosi (2003). Exploitation, exploration and innovation in a model of endogenous growth with locally interacting agents. *Structural Change and Economic Dynamics* 14(3), 237–273.
- Fagiolo, G., M. Guerini, F. Lamperti, A. Moneta, A. Roventini, et al. (2017). Validation of agent-based models in economics and finance. Technical report, Laboratory of Economics and Management (LEM), Sant’Anna School of Advanced Studies, Pisa, Italy.
- Fagiolo, G. and A. Roventini (2017). Macroeconomic policy in dsge and agent-based models redux: New developments and challenges ahead. *Journal of Artificial Societies and Social Simulation* 20(1), 1.
- Greenwood, J. and B. Jovanovic (1990). Financial development, growth, and the distribution of income. *Journal of political Economy* 98(5, Part 1), 1076–1107.
- Greenwood, J. and B. D. Smith (1997). Financial markets in development, and the development of financial markets. *Journal of Economic dynamics and control* 21(1), 145–181.
- Jerzmanowski, M. (2017). Finance and sources of growth: evidence from the us states. *Journal of Economic Growth* 22(1), 97–122.
- Kaminsky, G. L. and C. M. Reinhart (1999). The twin crises: the causes of banking and balance-of-payments problems. *American economic review* 89, 473–500.
- King, R. G. and R. Levine (1993a). Finance and growth: Schumpeter might be right. *The quarterly journal of economics* 108(3), 717–737.
- King, R. G. and R. Levine (1993b). Finance, entrepreneurship and growth. *Journal of Monetary economics* 32(3), 513–542.
- Kneer, C. (2013). Finance as a magnet for the best and brightest: Implications for the real economy. Working Paper 392, DNB.

- Law, S. H. and N. Singh (2014). Does too much finance harm economic growth? *Journal of Banking & Finance* 41, 36–44.
- LeBaron, B. and L. Tesfatsion (2008). Modeling macroeconomies as open-ended dynamic systems of interacting agents. *American Economic Review* 98, 246–250.
- Levine, R. (1991). Stock markets, growth, and tax policy. *The Journal of Finance* 46(4), 1445–1465.
- Levine, R. (2005). Finance and growth: theory and evidence. *Handbook of economic growth* 1, 865–934.
- Levine, R., N. Loayza, and T. Beck (2000). Financial intermediation and growth: Causality and causes. *Journal of monetary Economics* 46(1), 31–77.
- Madsen, J. B. and J. B. Ang (2016). Finance-led growth in the oecd since the nineteenth century: How does financial development transmit to growth? *Review of Economics and Statistics* 98(3), 552–572.
- Nelson, R. and S. Winter (1982). *An Evolutionary Theory of Economic Change*. Harvard University Press.
- Nelson, R. and S. Winter (2002). Evolutionary theorizing in economics. *Journal of Economic Perspectives* 16, 23–46.
- Nyasha, S. and N. M. Odhiambo (2017). Financial development and economic growth nexus: A revisionist approach. *Economic Notes*, In Press.
- Philippon, T. and A. Reshef (2013). An international look at the growth of modern finance. *The Journal of Economic Perspectives* 27(2), 73–96.
- Rajan, R. G. and L. Zingales (1998). Financial dependence and growth. *The American economic review* 88(3), 559–586.
- Robinson, J. (1952). The generalization of the general theory. In J. Robinson (Ed.), *The Rate of Interest and Other Essays*. London: MacMillan.
- Schularick, M. and A. M. Taylor (2012). Credit booms gone bust: monetary policy, leverage cycles, and financial crises, 1870–2008. *The American Economic Review* 102(2), 1029–1061.
- Schumpeter, J. A. (1911). *The Theory of Economic Development*. Harvard University Press.
- Silverberg, G. and B. Verspagen (1995). Evolutionary theorizing on economic growth. IIASA Working Papers WP-95-078, IIASA, Laxenburg, Austria.
- Sirri, E. and P. Tufano (1995). The economics of pooling. In Crane, D.B., et al. (Eds.), *The Global Financial System: A Functional Approach*. Harvard Business School Press.
- Stiglitz, J. E. and A. Weiss (1981). Credit rationing in markets with imperfect information. *The American economic review* 71(3), 393–410.
- Stiglitz, J. E. and A. Weiss (1983). Incentive effects of terminations: Applications to the credit and labor markets. *The American Economic Review* 73(5), 912–927.

Stolbov, M. (2017). Causality between credit depth and economic growth: Evidence from 24 oecd countries. *Empirical Economics* 53(2), 493–524.

Tesfatsion, L. and K. Judd (Eds.) (2006). *Handbook of Computational Economics II: Agent-Based Computational Economics*. North Holland, Amsterdam.



## ABOUT OFCE

---

The Paris-based Observatoire français des conjonctures économiques (OFCE), or French Economic Observatory is an independent and publicly-funded centre whose activities focus on economic research, forecasting and the evaluation of public policy.

Its 1981 founding charter established it as part of the French Fondation nationale des sciences politiques (Sciences Po), and gave it the mission is to “ensure that the fruits of scientific rigour and academic independence serve the public debate about the economy”. The OFCE fulfils this mission by conducting theoretical and empirical studies, taking part in international scientific networks, and assuring a regular presence in the media through close cooperation with the French and European public authorities. The work of the OFCE covers most fields of economic analysis, from macroeconomics, growth, social welfare programmes, taxation and employment policy to sustainable development, competition, innovation and regulatory affairs..

## ABOUT SCIENCES PO

---

Sciences Po is an institution of higher education and research in the humanities and social sciences. Its work in law, economics, history, political science and sociology is pursued through [ten research units](#) and several crosscutting programmes.

Its research community includes over [two hundred twenty members](#) and [three hundred fifty PhD candidates](#). Recognized internationally, their work covers [a wide range of topics](#) including education, democracies, urban development, globalization and public health.

One of Sciences Po's key objectives is to make a significant contribution to methodological, epistemological and theoretical advances in the humanities and social sciences. Sciences Po's mission is also to share the results of its research with the international research community, students, and more broadly, society as a whole.

## PARTNERSHIP

---