



## A model of the FED's view on inflation

Thomas Hasenzagl, Fillipo Pellegrino, Lucrezia Reichlin, Giovanni Ricco

### ► To cite this version:

Thomas Hasenzagl, Fillipo Pellegrino, Lucrezia Reichlin, Giovanni Ricco. A model of the FED's view on inflation. 2018. hal-03458456

**HAL Id: hal-03458456**

**<https://sciencespo.hal.science/hal-03458456>**

Preprint submitted on 30 Nov 2021

**HAL** is a multi-disciplinary open access archive for the deposit and dissemination of scientific research documents, whether they are published or not. The documents may come from teaching and research institutions in France or abroad, or from public or private research centers.

L'archive ouverte pluridisciplinaire **HAL**, est destinée au dépôt et à la diffusion de documents scientifiques de niveau recherche, publiés ou non, émanant des établissements d'enseignement et de recherche français ou étrangers, des laboratoires publics ou privés.

# **A MODEL OF THE FED'S VIEW ON INFLATION**

Thomas Hasenzagl, Filippo Pellegrino, Lucrezia Reichlin,  
Giovanni Ricco

---

**SCIENCES PO OFCE WORKING PAPER n° 03, 2018/01/16**

---

## EDITORIAL BOARD

**Chair: Xavier Ragot** (Sciences Po, OFCE)

**Members: Jérôme Creel** (Sciences Po, OFCE), **Eric Heyer** (Sciences Po, OFCE), **Lionel Nesta** (Université Nice Sophia Antipolis), **Xavier Timbeau** (Sciences Po, OFCE)

## CONTACT US

OFCE  
10 place de Catalogne | 75014 Paris | France  
Tél. +33 1 44 18 54 24

[www.ofce.fr](http://www.ofce.fr)

## WORKING PAPER CITATION

This Working Paper:

Thomas Hasenzagl, Filippo Pellegrino, Lucrezia Reichlin, Giovanni Ricco,

**A Model of the Fed's View on Inflation**

*Sciences Po OFCE Working Paper*, n°03, 2018-01-16.

Downloaded from URL: [www.ofce.sciences-po.fr/pdf/dtravail/WP2018-03.pdf](http://www.ofce.sciences-po.fr/pdf/dtravail/WP2018-03.pdf)

DOI - ISSN

## **ABOUT THE AUTHORS**

**Thomas Hasenzagl**, Now-Casting Economics

**Filippo Pellegrino**, London School of Economics, and Now-Casting Economics

**Lucrezia Reichlin**, London Business School, Now-Casting Economics, and CEPR

**Giovanni Ricco**, University of Warwick and OFCE, Sciences Po Paris

**Email Address:** <mailto:giovanni.ricco@sciencespo.fr>

## **ABSTRACT**

A view often expressed by the Fed is that three components matter in inflation dynamics: a trend anchored by long run inflation expectations; a cycle connecting nominal and real variables; and oil prices. This paper proposes an econometric structural model of inflation formalising this view. Our findings point to a stable expectational trend, a sizeable and well identified Phillips curve and an oil cycle which, contrary to the standard rational expectation model, affects inflation via expectations without being reflected in the output gap. The latter often overpowers the Phillips curve. In fact, the joint dynamics of the Phillips curve cycle and the oil cycles explain the inflation puzzles of the last ten years.

## **KEY WORDS**

Phillips curve, output gap, unobserved components, Bayesian estimation.

## **JEL**

C11, C32, C53, E31, E32, E52.

# A Model of the Fed's View on Inflation

Thomas Hasenzagl<sup>1</sup>, Filippo Pellegrino<sup>2</sup>, Lucrezia Reichlin<sup>3</sup>, and Giovanni Ricco<sup>4</sup>

<sup>1</sup>*Now-Casting Economics*

<sup>2</sup>*London School of Economics, and Now-Casting Economics*

<sup>3</sup>*London Business School, Now-Casting Economics, and CEPR*

<sup>4</sup>*University of Warwick and OFCE – SciencesPo*

This version: 20th December 2017

## Abstract

A view often expressed by the Fed is that three components matter in inflation dynamics: a trend anchored by long run inflation expectations; a cycle connecting nominal and real variables; and oil prices. This paper proposes an econometric structural model of inflation formalising this view. Our findings point to a stable expectational trend, a sizeable and well identified Phillips curve and an oil cycle which, contrary to the standard rational expectation model, affects inflation via expectations without being reflected in the output gap. The latter often overpowers the Phillips curve. In fact, the joint dynamics of the Phillips curve cycle and the oil cycles explain the inflation puzzles of the last ten years.

---

We are grateful to Filippo Altissimo, Guido Ascari, Marco del Negro, and conference participants at the 2017 EEA Conference for helpful comments and suggestions.

Inflation is characterized by an underlying trend that has been essentially constant since the mid-1990s; [...]. Theory and evidence suggest that this trend is strongly influenced by inflation expectations that, in turn, depend on monetary policy. In particular, the remarkable stability of various measures of expected inflation in recent years presumably represents the fruits of the Federal Reserve’s sustained effort since the early 1980s to bring down and stabilize inflation at a low level. The anchoring of inflation expectations [...] does not, however, prevent actual inflation from fluctuating from year to year in response to the temporary influence of movements in energy prices and other disturbances. In addition, inflation will tend to run above or below its underlying trend to the extent that resource utilization—which may serve as an indicator of firms’ marginal costs—is persistently high or low.

Yellen (2016), ‘Macroeconomic Research After the Crisis’  
Speech for the 60th Boston Fed Conference

In the Federal Reserve’s view – and, more generally, for central bankers in advanced countries – three components matter to inflation dynamics: trend-expectations, oil prices and the Phillips curve (PC). This simple representation, however, clashes with results in the academic literature. First, many have found the Phillips curve to be unstable, hard to identify and not a good forecasting model. Indeed, Phillips curve based forecasting models have been shown to perform poorly with respect to naive benchmarks (see, [Atkeson and Ohanian, 2001](#) and [Stock and Watson, 2007](#) for more recent evidence and relevant discussion). Second, an increasingly popular literature has challenged the idea that expectations are fully anchored and forward looking. For example, since the 2008 crisis, papers have connected the ‘missing disinflation puzzle’ to the partial dis-anchoring of consumers’ inflation expectations that in turn can be accounted for by the evolution of oil prices (see, e.g., [Coibion and Gorodnichenko, 2015](#)).

This paper proposes an econometric representation of the central bankers’ view and tries to reconcile it with the apparent wide range of contrasting findings in the academic literature.<sup>1</sup> Our strategy is to specify a trend-cycle model for inflation dynamics that

---

<sup>1</sup>A survey of the extensive empirical literature on the PC is beyond the scope of this paper. For a recent survey of the New Keynesian Phillips curve focusing on univariate limited-information methods, see [Mavroeidis et al. \(2014\)](#). For a review of results using full-information methods to estimate dynamic stochastic general equilibrium (DSGE) models, see ([An and Schorfheide, 2007](#)). [Nakamura and Steinsson \(2013\)](#) review the use of microeconomic data to study price dynamics. [Coibion et al. \(2017\)](#) discuss the incorporation of survey data on inflation expectations in models of inflation dynamics. Other surveys, providing complementary approaches, include [Henry and Pagan \(2004\)](#), [Ólafsson](#)

captures the three components the Fed is focusing on – trend-expectations, oil prices and the Phillips curve – and to assess how well this model fits the data, how it relates to the ‘narratives’ identified by the literature, and how it performs in an out-of-sample forecasting exercise.

The baseline model includes CPI inflation, the median forecasts for 1-year-ahead CPI inflation of the University of Michigan consumers survey (UoM), and of the Philadelphia Fed Survey of Professional Forecaster (SPF) as measures of agents’ expectations, GDP and the unemployment rate as proxies for real economic conditions and oil prices, from the 1980’s. We impose minimal restrictions on the data to identify three orthogonal components of inflation: (i) a drifting unit root trend common to inflation and inflation expectations;<sup>2</sup> (ii) a stationary stochastic cycle connecting real variables, nominal variables and expectations, that we think of as the Phillips curve and that relates to the output gap; (iii) a stationary stochastic cycle capturing the common dynamics between oil prices, inflation expectations and CPI inflation but not affecting real variables.

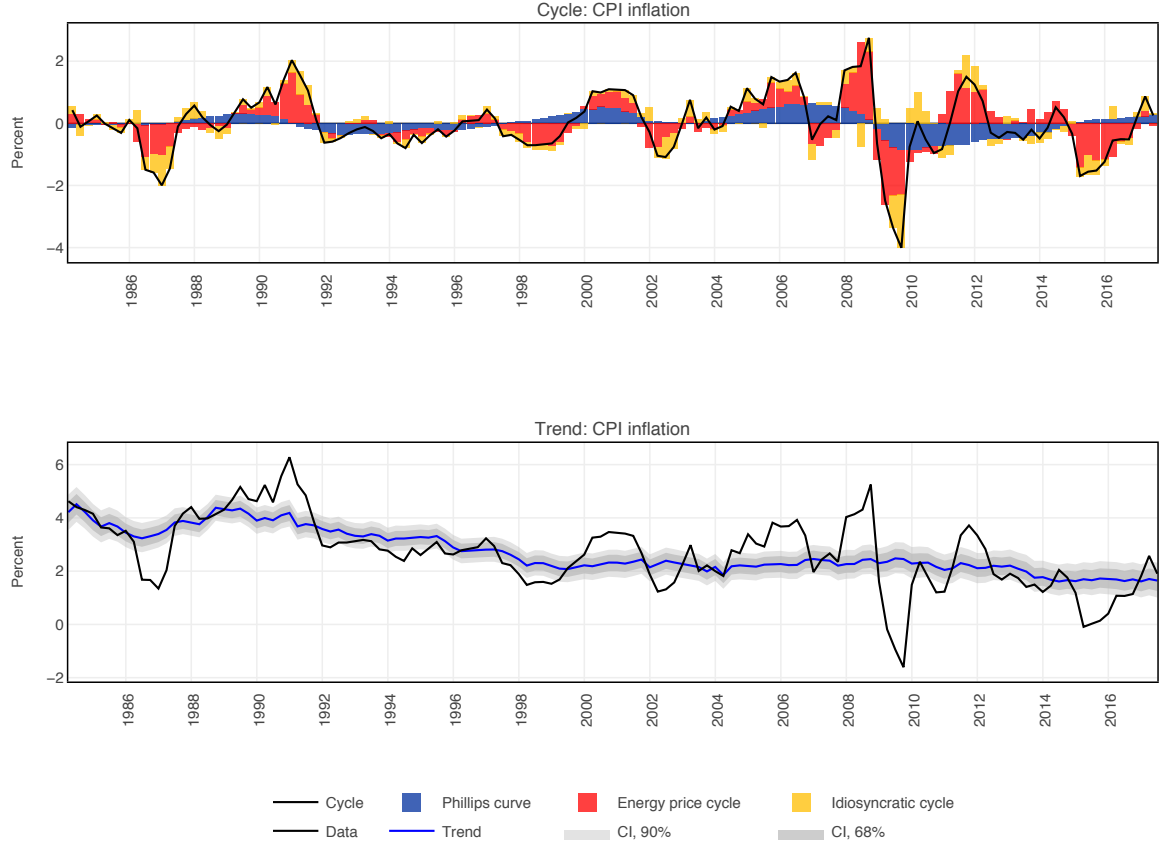
Our identification remains agnostic about the nature of the trend and only requires inflation deviations from the trend to stationary, yet it allows for a meaningful economic interpretation of the three components. First, the unit root trend common to inflation and inflation forecasts can be related to agents’ long term expectations, under the assumption that the ‘law of iterated expectations’ holds (see [Beveridge and Nelson, 1981](#) and [Mertens, 2016](#)). In fact, the impact of all transitory components has to be zero in the long run.<sup>3</sup> Second and importantly, our specification nests several potentially different forward and backward looking Phillips curve models, including the standard New-Keynesian Phillips curve (NKPC) in which inflation is a pure forward-looking process, driven by expectations of future real economic activity. Third, the second cycle, that is a key and novel feature of our model that – in line with the findings of [Coibion and Gorodnichenko \(2015\)](#) – allows for disturbances in expectations due to energy price movements to directly impact inflation without affecting the measures of real activity. In other words, in contrast to a standard rational expectations model where the effect of oil shocks on price inflation is fully captured by the Phillips curve and the output gap, we allow energy price disturbances to temporarily ‘disanchor’ inflation expectations generating price movements not transmitted through the measure of slack in the economy. Finally, we also allow survey data to depart from the full inform-

---

(2006), [Rudd and Whelan \(2007\)](#), [Nason and Smith \(2008\)](#), [Gordon \(2011\)](#), and [Tsoukis et al. \(2011\)](#).

<sup>2</sup>The choice of modelling inflation as non-stationary is supported by findings in the forecasting literature which suggests that models perform better when they allow for trend inflation ([Faust and Wright, 2013](#)).

<sup>3</sup>A discussion on the conditions under which of survey data can be employed to study the PC is [Adam and Padula \(2011\)](#).



**Figure 1:** Trend and Cycle of inflation

ation rational expectations models without imposing any specific form of information friction. We do not require either of the two surveys to be an efficient and unbiased predictor of future inflation, and allow for temporary and permanent deviations from a rational forecast, potentially capturing measurement and observational errors, as well as a time-dependent bias in inflation expectations.

Figure 1 shows the three components as they are understood by our model and portrays a synthetic view of our findings. The upper panel describes the stationary component of inflation and splits it into the contribution of the Phillips curve (blue area), an ‘energy price cycle’ (red area) and an idiosyncratic stationary component uncorrelated to real variables and oil prices (yellow area). The bottom panel describes the expectation trend. Through the lense of our model, it appears that both oil prices and real activity matter in explaining temporary fluctuations in inflation and that the two cycles have different characteristics in terms of volatility and persistence. In the bottom panel, the trend in inflation appears to have been slowly drifting downwards – quite stable from 2000 until 2010, and slightly declining since.

Results reported indicate that the Phillips curve – better understood as a relationship connecting real and nominal variables, and inflation expectations – is alive and



well, and has been fairly stable since the early '80s.<sup>4</sup> Importantly, our cycle decomposition shows that the Phillips curve is not always the dominant component. Large oil price fluctuations can move consumers' expectations away from the real-nominal relationship – 'disanchor' them – and induce expectation driven fluctuations in prices. This result confirms the intuition of [Coibion and Gorodnichenko \(2015\)](#) in a methodology which, in contrast with their approach, allows to recover the Phillips curve as orthogonal to oil-driven movements in the expectations and prices that are not transmitted to real variables. We provide confirmation of the importance of using expectational data to identify both trend inflation and the Phillips curve, while dealing with disturbances to expectations that, albeit reflected in inflation, are unrelated to real variables and fundamentals. From a policy perspective, the stable inflation trend is an indication of the Fed's success in anchoring expectations. However, our results also point to the challenges that policymakers have to overcome in guiding expectations and stabilising the economy in the presence of large energy price disturbances.

From the econometric point of view, our work builds on the tradition of structural time series models (see [Harvey, 1985](#)) where observed time series are modelled as the sum of unobserved components: common and idiosyncratic trends and common and idiosyncratic cycles. In doing this and by focussing on inflation dynamics, this paper relates to the literature on the output gap, the Phillips curve and trend inflation estimation with unobserved components models, started by [Kuttner \(1994\)](#). Similarly to [Baştürk et al. \(2014\)](#) and [Lenza and Jarociński \(2016\)](#), we do not pre-filter data to stationarity; we model their low frequency behaviour by allowing for trends in GDP and inflation variables. As in [Gordon \(1982\)](#) and [Basistha and Startz \(2008\)](#) we use multiple real activity indicators to increase the reliability of the output gap estimates. Also, we relate to a number of papers which have studied trend inflation in unobserved component models augmented with data on long-term inflation expectations, as for example, [Clark and Doh \(2014\)](#), and [Mertens \(2016\)](#).

Our econometric representation can be understood as a restricted Vector Autoregressive (VAR) model where, by adopting minimal economic restrictions to identify the potentially different dynamic components of inflation, we induce 'informed' parsimony thereby helping with signal extraction and forecasting. The proposed decomposition leads to a rather complex state space form. In order to deal with this complexity, we employ Bayesian methods. A Bayesian approach in the context of a similar but simpler model has been proposed by [Planas et al. \(2008\)](#) who implement a Bayesian version of

---

<sup>4</sup>While we observe that a fixed parameter model is able to capture a stable Phillips curve from the '80s, it is possible that time-variation in the parameters (for example of the drift in the unit root trend inflation) or stochastic volatility may be important over a longer sample (see [Stock and Watson, 2007](#)). We do not explore this possibility in this paper. Indeed, estimation uncertainty is likely to obfuscate all gains coming from a more sophisticated model.

the work of [Kuttner \(1994\)](#) and, more recently, by [Lenza and Jarociński \(2016\)](#). The latter paper is the closest to our work but it focuses on estimating measures of the output gap in the Euro Area rather than on providing a decomposition to be used for understanding of the drivers of inflation dynamics.

## 2. A trend-cycle model for inflation

### 2.1. A stylised model for inflation dynamics

To provide intuition for our empirical strategy, we consider a stylised textbook rational expectations model for inflation and output. We assume that inflation and output can be decomposed into three components: (i) an independent trend  $\mu_t^j$ , (ii) a common stationary cycle relating nominal and real variables  $\psi_t^{PC}$ , and (iii) some idiosyncratic white noise disturbance that can be thought of as classic measurement error  $\psi_t^j$

$$\begin{aligned} y_t &= \mu_t^y + \psi_t^{PC} + \psi_t^y, \\ \pi_t &= \mu_t^\pi + \delta_\pi \psi_t^{PC} + \psi_t^\pi, \end{aligned}$$

where the independent trends are assumed to be unit-root processes with drifts

$$\mu_t^j = \tau^j + \mu_{t-1}^j + u_t^j.$$

The economic interpretation of the different trend and cycle components is standard. While the output trend is usually thought of as driven by technological innovation, the inflation trend is often linked to the behaviour of monetary policy (for example, policymakers may have targets that change over time). Conversely, the short-run cyclical fluctuations of inflation around the trend are often thought of as reflecting the effect of temporary shocks in the presence of price rigidity. Therefore, we can interpret the component of GDP explained by the common cycle with inflation variables as the output gap (this is the Phillips curve component of GDP).

In line with the econometric literature on the output gap, we assume that  $\psi_t^{PC}$  is a stationary process with stochastic cyclical behaviour. The simplest process allowing for such a stochastic cycle is an AR(2) process with complex roots of the form

$$\psi_t^{PC} = \alpha_1 \psi_{t-1}^{PC} + \alpha_2 \psi_{t-2}^{PC} + v_t.$$

It is worth noting that the AR(2)  $\psi_t^{PC}$  is a solution to a hybrid New Keynesian Phillips Curve connecting the cyclical components of output, inflation and inflation expecta-

tions, of the form:

$$\hat{\pi}_t = \sum_{i=1}^2 \hat{\pi}_{t-i} + \mathbb{E}_t [\hat{\pi}_{t+1}] + \hat{y}_t + v_t ,$$

where hats indicate deviations from trends.<sup>5</sup> In this model, rational expectation agents correctly form model-consistent expectations about inflation, that is

$$\begin{aligned} \mathbb{E}_t [\pi_{t+1}] = \mathbb{E}_t [\mu_{t+1}^\pi + \delta_\pi \psi_{t+1}^{PC} + \psi_{t+1}^\pi] &= \tau^\pi + \mu_t^\pi + \delta_\pi (\alpha_1 \psi_t^{PC} + \alpha_2 \psi_{t-1}^{PC}) \\ &= \tau^\pi + \mu_t^\pi + \delta_{exp,1} \psi_t^{PC} + \delta_{exp,2} \psi_{t-1}^{PC} . \end{aligned}$$

It is also worth noting that trend inflation corresponds to the long-run forecast for inflation, which implies

$$\lim_{h \rightarrow \infty} \mathbb{E}_t \{\pi_{t+h}\} = \lim_{h \rightarrow \infty} \{h\tau^\pi + \mu_t^\pi\} ,$$

in the spirit of [Beveridge and Nelson \(1981\)](#).

This stylised model admits a compact reduced form representation in terms of a common cycle and a common trend

$$\begin{pmatrix} y_t \\ \pi_t \\ \mathbb{E}_t [\hat{\pi}_{t+1}] - \tau \end{pmatrix} = \begin{pmatrix} 1 & 0 \\ \delta_\pi & 1 \\ \delta_{exp,1} + \delta_{exp,2}L & 1 \end{pmatrix} \begin{pmatrix} \psi_t^{PC} \\ \mu_t^C \end{pmatrix} + \begin{pmatrix} \mu_t^y \\ 0 \\ 0 \end{pmatrix} + \begin{pmatrix} \psi_t^y \\ \psi_t^\pi \\ 0 \end{pmatrix} , \quad (1)$$

that in principle can also accommodate different specifications for the Phillips Curve, under suitable parameter restrictions. For example, an AR(1)  $\psi_t^{PC}$  would be the solution to a purely forward looking New-Keynesian Phillips Curve. It also nests the backwards looking ‘Old-Keynesian’ Phillips curve connecting output gap and prices – as in the ‘triangle model of inflation’ (see [Gordon, 1982, 1990](#)).

While such a stylised rational expectations model can provide the gist of the intuition and of the interpretation of our econometric model, it is likely to be a too simplistic representation of inflation dynamics. For example, it has been argued in the literature that, once inflation expectations are admitted to a forward or backward Phillips curve equation, it is also possible that economic disturbances impact prices without any intermediating transmission through the output gap or other measures of slackness in the economy (see, for example, [Sims, 2008](#)). In this spirit, [Coibion and Gorodnichenko \(2015\)](#) argue that the absence of disinflation during the Great Reces-

---

<sup>5</sup>Empirical studies often feature hybrid Phillips curves to account for inflation persistence ([a recent survey is in Tsoukis et al., 2011](#)). Several different mechanisms have been proposed in the literature to introduce hybrid Phillips curves such as indexation assumptions (e.g. [Gali and Gertler, 1999](#)), state-contingent pricing (e.g. [Dotsey et al., 1999](#)), or deviations from rational expectations assumption (e.g. [Erceg and Levin, 2003](#); [Milani, 2007](#)).

sion can be explained by the rise of consumers' inflation expectations between 2009 and 2011 due to the increase in oil prices in this period. Also, while macro-variables are likely to be affected by non-classical measurement error, agents' expectations, as captured by consumers' and professional forecasters' surveys, are likely to be only partially in line with national accounting definitions of aggregate prices, and can introduce measurement errors and biases of a different nature.<sup>6</sup> For these reasons, the empirical model which we will bring to the data and describe in the next section, allows for these additional features.

## 2.2. The empirical model

In designing our empirical model, we generalise the functional form of the model in equation 1 to allow for deviations from the perfect rationality in the stylised model. In particular, we want the model to be able to account for several potential deviations from the rational expectations benchmark. We allow for (i) oil price disturbances to affect prices directly via economic agents' expectations, with a stationary cycle connecting oil prices, expectations and inflation but not the measure of slack in the economy, and hence inducing a transitory disanchoring of expectations; (ii) a time varying bias i.e. a permanent disanchoring of expectations in the form of unit root processes; (iii) non-classic measurement error in the variables and other sources of coloured noise.

We summarise these modelling choices in the following assumptions.

**Assumption 1** CPI inflation and agents' (consumers and professional forecasters) inflation expectations share a common random walk trend with drift.

**Assumption 2** Inflation, inflation expectations, and real variables are connected by a Phillips curve in the form of a common ARMA(2,1) stationary cycle with complex roots.

**Assumption 3** Inflation expectations, inflation, and oil prices are connected by a common ARMA(2,1) cycle (Oil Price cycle), orthogonal to the Phillips curve cycle (output gap).

**Assumption 4** All variables can have an idiosyncratic cycle component, capturing non-classic measurement error, differences in definitions and other sources of noise.

**Assumption 5** Real variables have independent trends modelled with unit roots with drifts.

---

<sup>6</sup>For example, especially in consumers surveys the forecast horizon may be loosely defined while the relevant price index may be left unspecified. Also, projections are often reported at different frequencies and can have different forecasting points.

**Table 1:** Data and transformations

Variable	Mnemonic	Transformation
Unemployment rate	<i>u</i>	Levels
Real GDP	<i>y</i>	Levels
Oil price	<i>oil</i>	Levels
CPI inflation	$\pi$	YoY
UoM: Expected inflation	<i>uom</i>	Levels
SPF: Expected CPI	<i>spf</i>	Levels

**Note:** The table lists the macroeconomic variables used in the empirical model. “UoM: Expected inflation” is the University of Michigan, 12-months ahead expected inflation rate. “SPF: Expected CPI” is the Survey of Professional Forecaster’s, 4-quarters ahead expected CPI inflation rate. The oil price is the West Texas Intermediate Spot oil price.

**Assumption 6** Agents’ (consumers and professional forecasters) expectations have independent idiosyncratic unit roots without drift, capturing time varying bias in the forecast.

**Assumption 7** All components are mutually orthogonal.

Our benchmark empirical model expands on the core rational expectations model in equation 1 by incorporating a fairly rich information set including the unemployment rate and output as measures of real activity, oil prices to proxy for energy prices, CPI inflation, and the median of the UoM consumer survey and the Philadelphia Fed SPFs one year ahead inflation forecast as proxies for consumers’ and professionals’ expectations (see Table 1 for details). Data are quarterly, with the sample starting in Q1 1984 and ending in Q2 2017. All variables are considered in levels, except for CPI, which is transformed to the year-on-year inflation rate. The series are standardised so that the standard deviations of their first differences are equal to one.

For the purpose of this analysis the UoM’s survey of consumers, and the Federal Reserve Bank of Philadelphia’s SPFs were chosen because they both have relatively long histories and are available at quarterly frequency. Both target CPI inflation, either explicitly as is the case of SPF, or implicitly by surveying consumers, as is the case for UoM. Both surveys measure the median expected price change in the four quarters following the date of the survey, which is consistent with our use of year-on-year inflation.

The maintained assumptions allow the identification of the model in  $x_t \equiv \{u_t, y_t,$

$oil_t, \pi_t, uom_t, spf_t\}$  (see, e.g. Bai and Wang, 2015), that can be written as

$$\begin{pmatrix} u_t \\ y_t \\ oil_t \\ \pi_t \\ uom_t \\ spf_t \end{pmatrix} = \begin{pmatrix} 1 & 0 & 0 \\ \delta_y & 0 & 0 \\ 0 & 1 & 0 \\ \delta_\pi & \gamma_\pi & \phi_\pi \\ \delta_{uom,1} + \delta_{uom,2}L & \gamma_{uom} & \phi_{uom} \\ \delta_{spf,1} + \delta_{spf,2}L & \gamma_{spf} & \phi_{spf} \end{pmatrix} \begin{pmatrix} \psi_t^{PC} \\ \psi_t^{EP} \\ \mu_t^C \end{pmatrix} + \begin{pmatrix} \psi_t^u \\ \psi_t^y \\ \psi_t^{oil} \\ \psi_t^\pi \\ \psi_t^{uom} \\ \psi_t^{spf} \end{pmatrix} + \begin{pmatrix} \mu_t^u \\ \mu_t^y \\ \mu_t^{oil} \\ 0 \\ \mu_t^{uom} \\ \mu_t^{spf} \end{pmatrix} \quad (2)$$

We normalise  $\phi_\pi$ ,  $\phi_{uom}$ , and  $\phi_{spf}$  to 1 over the standard deviation of the first difference of the respective variable.

It is worth noting that our empirical specification in Equation 2 would reduce to the stylised rational expectations model in Equation 1, under suitable parametric restrictions.

As discussed in Harvey (1990), the common and idiosyncratic ARMA(2,1) stationary cycles can be written in the following equivalent form:

$$\begin{bmatrix} \psi_t^j \\ \bar{\psi}_t^j \end{bmatrix} = \rho^j \begin{bmatrix} \cos(\lambda^j) & \sin(\lambda^j) \\ -\sin(\lambda^j) & \cos(\lambda^j) \end{bmatrix} \begin{bmatrix} \psi_{t-1}^j \\ \bar{\psi}_{t-1}^j \end{bmatrix} + \begin{bmatrix} v_t^j \\ \bar{v}_t^j \end{bmatrix}, \quad \begin{bmatrix} v_t^j \\ \bar{v}_t^j \end{bmatrix} \sim N(0, \varsigma_j^2 I_2) \quad (3)$$

where  $j \in \{PC, EP, x_1, \dots, x_n\}$

where  $\bar{\psi}^j$  is just a modelling device and the stationarity requirement imposes  $0 < \lambda^j \leq \pi$  and  $0 < \rho^j < 1$ .<sup>7</sup> As discussed, the common and idiosyncratic trends are random walks (with/without) drifts that can be written as

$$\mu_t^j = \tau^j + \mu_{t-1}^j + u_t^j, \quad u_t^j \sim N(0, \sigma_j^2).$$

It is also worth noticing that the common and idiosyncratic trends in inflation and inflation expectations are identified up to a constant. For the sake of interpretation, we attribute the constant to the common trend so that it is on the same scale as the observed inflation variables.

Our estimation strategy builds on the approach recently suggested by Harvey et al. (2007), that combines ‘structural’ trend-cycle models á la Harvey (1985) with modern Bayesian techniques. Indeed, the frequentist maximum likelihood estimation of unobserved component models delivers inaccurate estimates and – as a result – implausible cycles and trends. Conversely, Bayesian estimation methods can effectively deal with these estimation issues by the use of priors.

We impose diffuse or not very informative priors and then maximise and simu-

---

<sup>7</sup>The intuition for this is closely related to the standard multivariate AR(1) representation of univariate AR(p) processes.

late the posterior with a Metropolis-Within-Gibbs algorithm that is structured in two blocks. In the first block, we estimate the state space parameters by the Metropolis algorithm and in the second block we use the Gibbs algorithm to draw unobserved states conditional on model parameters. Relevant details and references are in the text and appendix A. Section 4.1 reports our diagnostic analysis showing the role of priors in the estimates.<sup>8</sup>

### 3. Cycles and Trends in Inflation

#### 3.1. Cycles

We first illustrate the Phillips curve and oil price cycles as identified and estimated by our model. Figure 2 shows results both in the time and frequency domain. The upper charts report the median of the posterior distribution of the Phillips curve and the energy price cycle with relative confidence intervals at 84% coverage (dark shade) and 90% coverage (light shade). The lower charts show the associated spectral densities and coverage. The charts indicate that the Phillips curve cycle is less volatile than the oil price cycle. It is also more persistent with a cycle between 7 and 8 years periodicity, about twice as long as that of the oil price cycle.

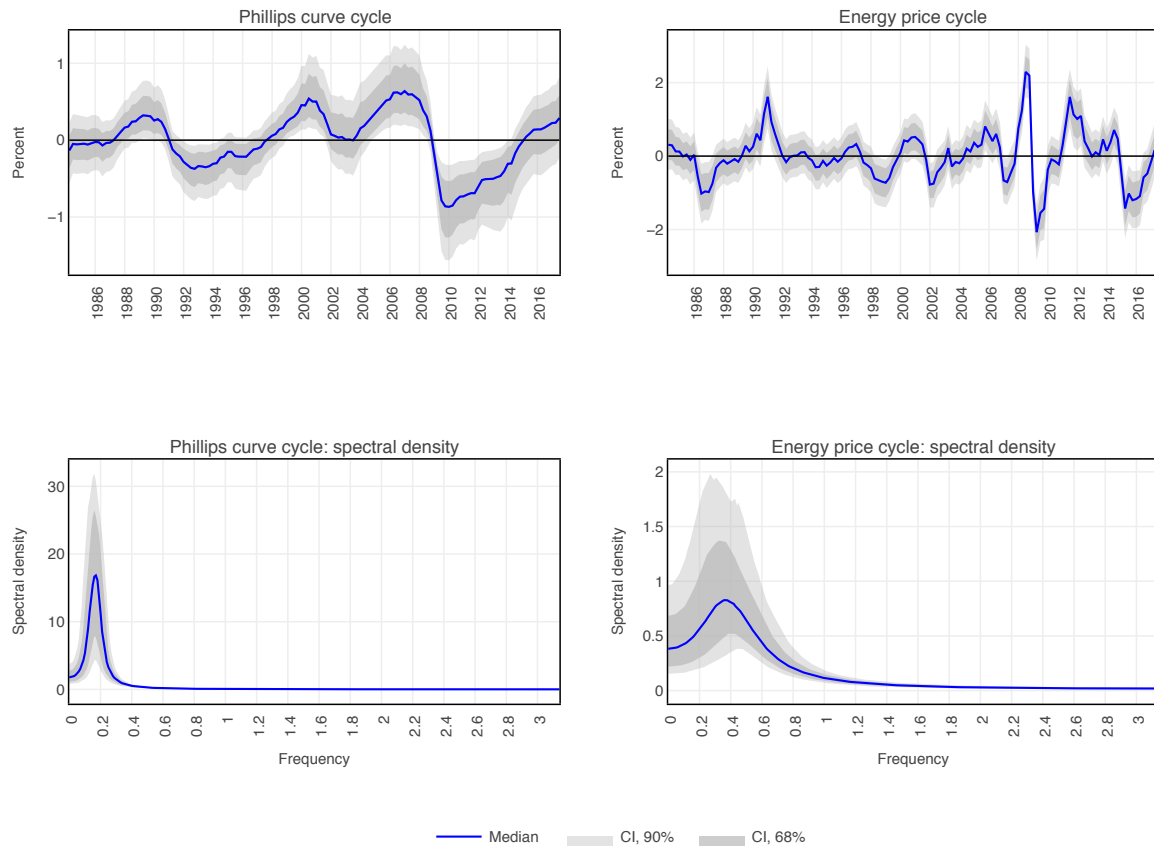
Figure 3 shows the output gap estimate produced by the model. This is obtained by rescaling the Phillips curve cycle to match the GDP scale and to be comparable with the output gap produced by the Congressional Budget Office (CBO). Since the new millennium our estimate and that of the CBO have given a different view of the degree of slack in the economy. At the time of the slowdown of 2001-2002, our model indicates that the economy went from over-capacity to trend growth but, unlike the CBO's, does not identify a protracted period of slack. Moreover, we estimate a milder recession since 2008 and find the economy to have been above full capacity since 2015. Our model, which, as we have seen, has a variable random trend, attributes the slowdown since the early millennium to the trend rather than the cycle. This is a nice feature since research has pointed to a slow-down in productivity growth since that date (see, for example, Hall et al. 2017).

Let us now turn to the contributions of the different cyclical components to the total cycles of the six variables considered in the model. Figure 4 shows the results. There are a number of interesting features which we would like to highlight.

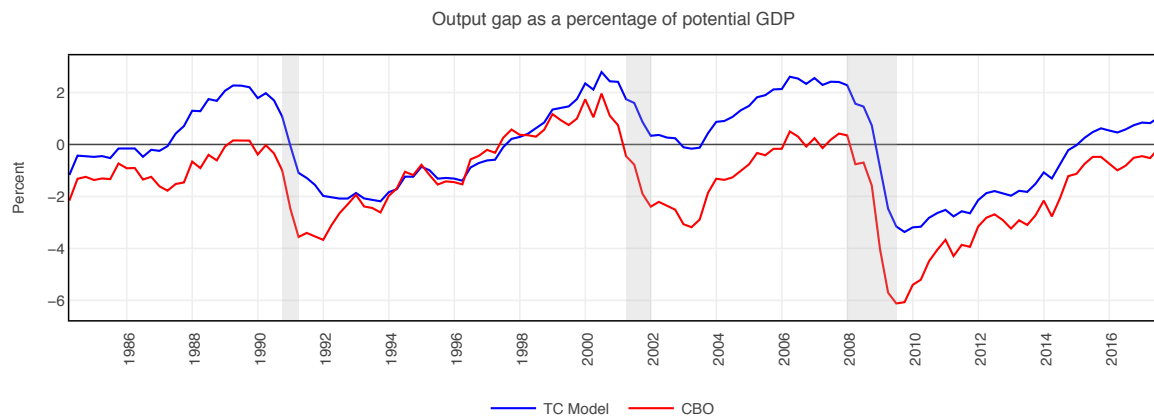
1. The CPI inflation cycle is dominated by the oil price components although the Phillips curve captures lower frequency dynamics. Notice that the two cycles are

---

<sup>8</sup>The lags for the survey variables in equation 2 can easily be implemented by including the auxiliary cycle  $\psi_t^j$  from equation 3.



**Figure 2:** Common cycles in time and frequency domain

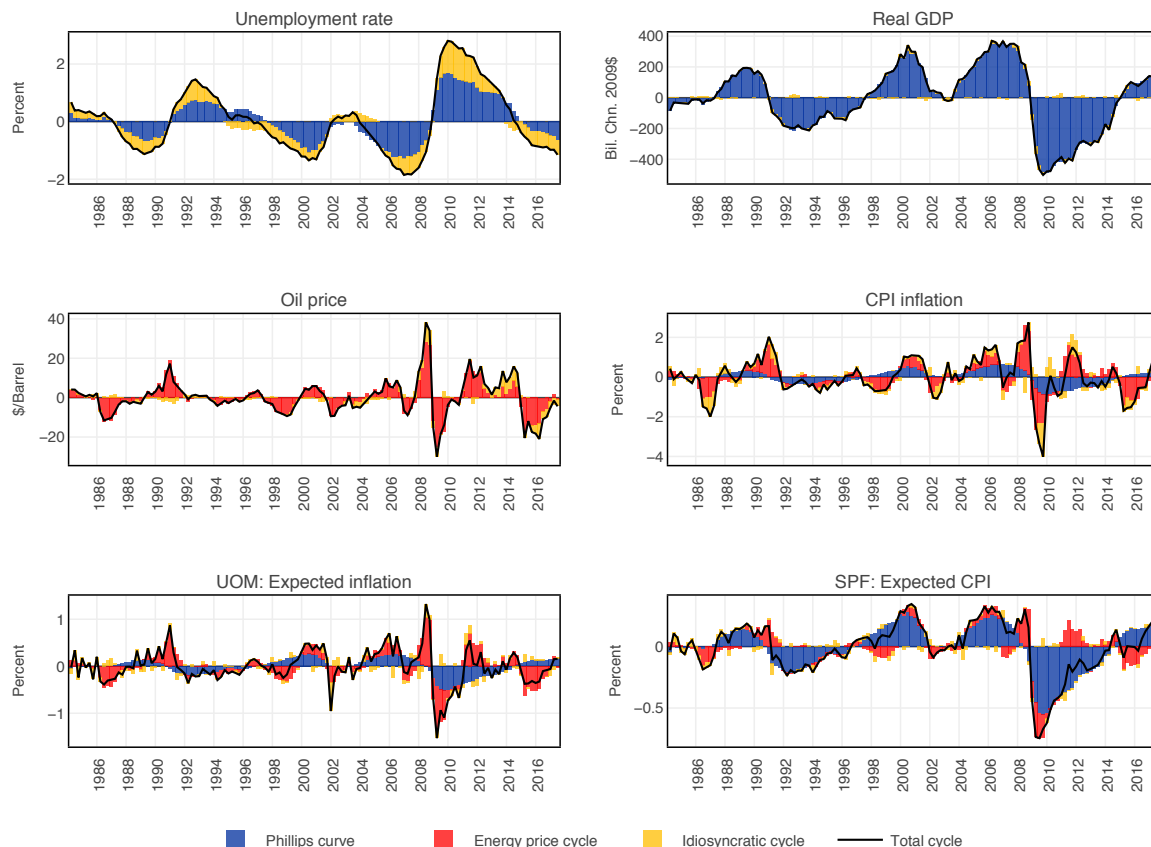


**Figure 3:** Output gap from trend-cycle model and CBO output gap

not in any sense ‘synchronised’. For example, from 2009 to 2014 the Phillips curve drags inflation down while oil prices push it up.

2. There is a striking difference between the cycle of SPF expectations and that of UoM consumer expectations. While the latter show a decomposition which is similar to that of CPI inflation, with a sizeable contribution from the oil price



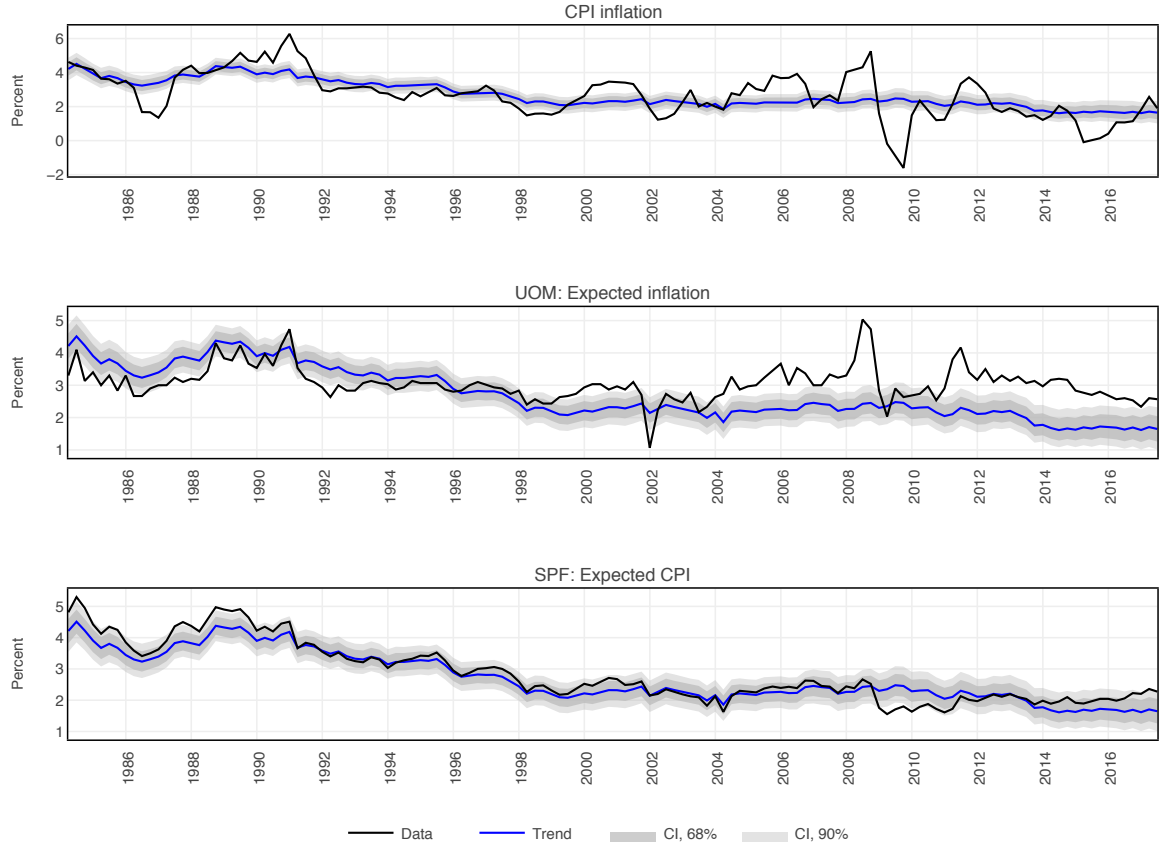


**Figure 4:** Historical decomposition of the cycles

cycle, the SPF cyclical dynamics are dominated by the Phillips curve which accounts for most of their cyclical component.

3. Unemployment has a larger idiosyncratic cycle than GDP which is likely to reflect its lagging dynamics with respect to the GDP cycle.

The historical decomposition sheds light onto some of the puzzling behaviour of inflation post 2008. From 2011 to mid 2012 the inflation cycle is supported by oil while the Phillips curve exerts negative pressure. The opposite is true from 2015 to the end of 2016 when oil prices drag inflation down while the Phillips curve exerts a small upward pressure. The cyclical part of inflation is well captured by these two components and little is left to idiosyncratic forces. Not surprisingly, consumer expectations follow a similar pattern as CPI while the SPF cycle is dominated by the Phillips curve. Notice that the Phillips curve cycle is quite small post 2014. This is likely to reflect the fact that the recovery in output was weak relative to that of employment. Indeed, post 2014, unemployment shows a large idiosyncratic component.

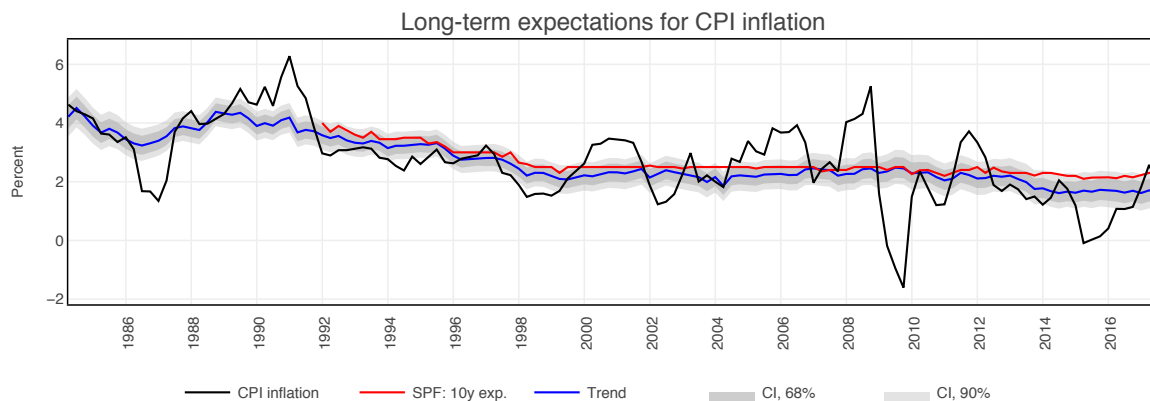


**Figure 5:** Common trend and CPI inflation, expectations

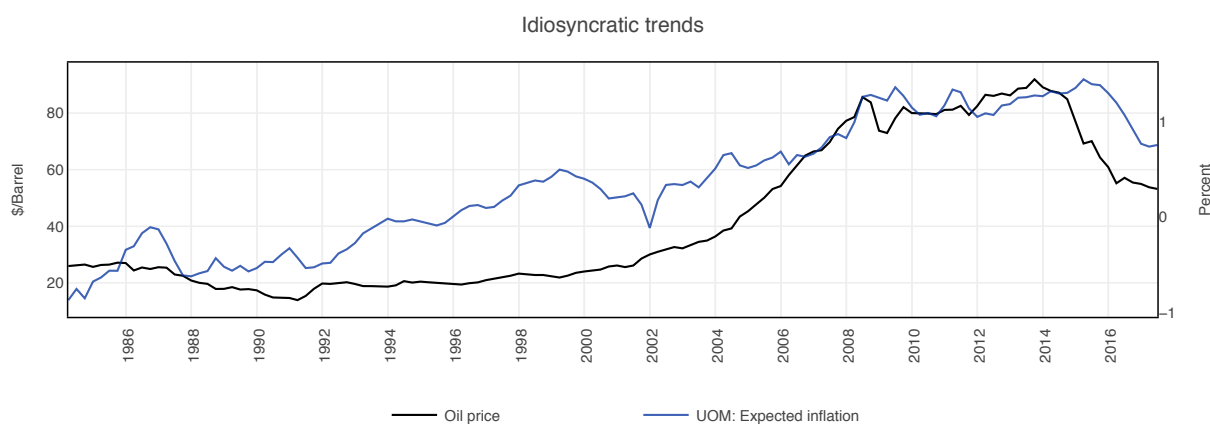
### 3.2. Trends

Figure 5 shows CPI inflation and the two inflation expectation variables against the median of the estimated common trend. We also report confidence bands with coverage at 84% (darker shade) and at 90% (lighter shade). The common trend is roughly stable from 2000 to 2010 and very correlated with the SPFs. Since the common trend corresponds to long-term inflation expectations plus a common drift, this suggests that the Fed has been able to keep expectations anchored, although a slight decline can be detected since 2010. Figure 6 also shows that the one-year ahead SPF trend is highly correlated with the 10-year ahead SPF confirming the interpretation that the model trend estimate captures long-term expectations. Indeed the unit root component in the inflation dynamics can be interpreted as agents' long term expectations, under the assumption that the 'law of iterated expectations' holds (see [Beveridge and Nelson, 1981](#) and [Mertens, 2016](#)).

The behaviour of the UoM expectations, on the other hand, shows large and persistent deviations from the common trend (long-term inflation expectations) since 2004. We interpret this sizeable time-varying idiosyncratic trend as a bias in consumer expect-



**Figure 6:** Common trend and 10 year expectations for CPI inflation

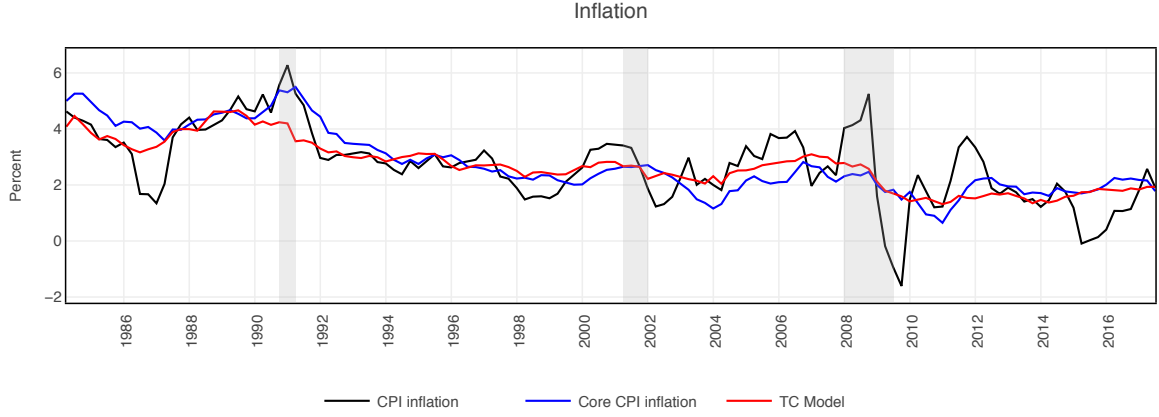


**Figure 7:** Idiosyncratic trend of oil price (left) and UOM Expected Inflation (right)

ations. The latter, as indicated by [Figure 7](#), suggests that consumer price expectations have a persistent component related to a persistent component in oil prices.

The result indicates that, as suggested by [Coibion and Gorodnichenko \(2015\)](#), household expectations are not fully anchored and respond strongly to oil price changes. In our model this is captured both by the contribution of the oil price cycle to the cyclical component of the UoM survey but can also spill into its idiosyncratic trend as an modelled bias component. In line with our results, [Coibion and Gorodnichenko \(2015\)](#) document that more than half of the historical differences in inflation forecasts between households and professional forecasters can be accounted for by the level of oil prices.

The model does not include a measure of core inflation. However, since we identify the stationary and non-stationary components of CPI inflation that are due to oil prices, we can create a ‘model-implied’ measure of core inflation by removing the oil component from CPI. [Figure 8](#) compares core CPI inflation with this ‘model-implied’ measure.



**Figure 8:** Core CPI inflation versus model implied core CPI inflation

## 4. Model Diagnostics

In the next section we will assess the robustness of our results. We will do it in different ways: comparing priors and posteriors, presenting the distribution of draws on the coefficients and performing an out-of-sample exercise.

### 4.1. Priors and posteriors

Table 2 reports parameters of our priors while Figure 9 and Figure 10 illustrate the priors against the posteriors for the variance of the error terms of the unobserved components, the frequency and the persistence of the two common cycles. The charts provide an indicator of the degree of ‘informativeness’ of the data. Results indicate that the data are informative in estimating the many parameters of the model – in particular the variance of the shocks of the common components and the frequencies of the cycles.

Importantly, the posterior distribution of the coefficients for both the Phillips curve and the energy price cycles (Figure 11) which indicates that a coefficient equal to zero has negligible probability to be drawn in both cases.

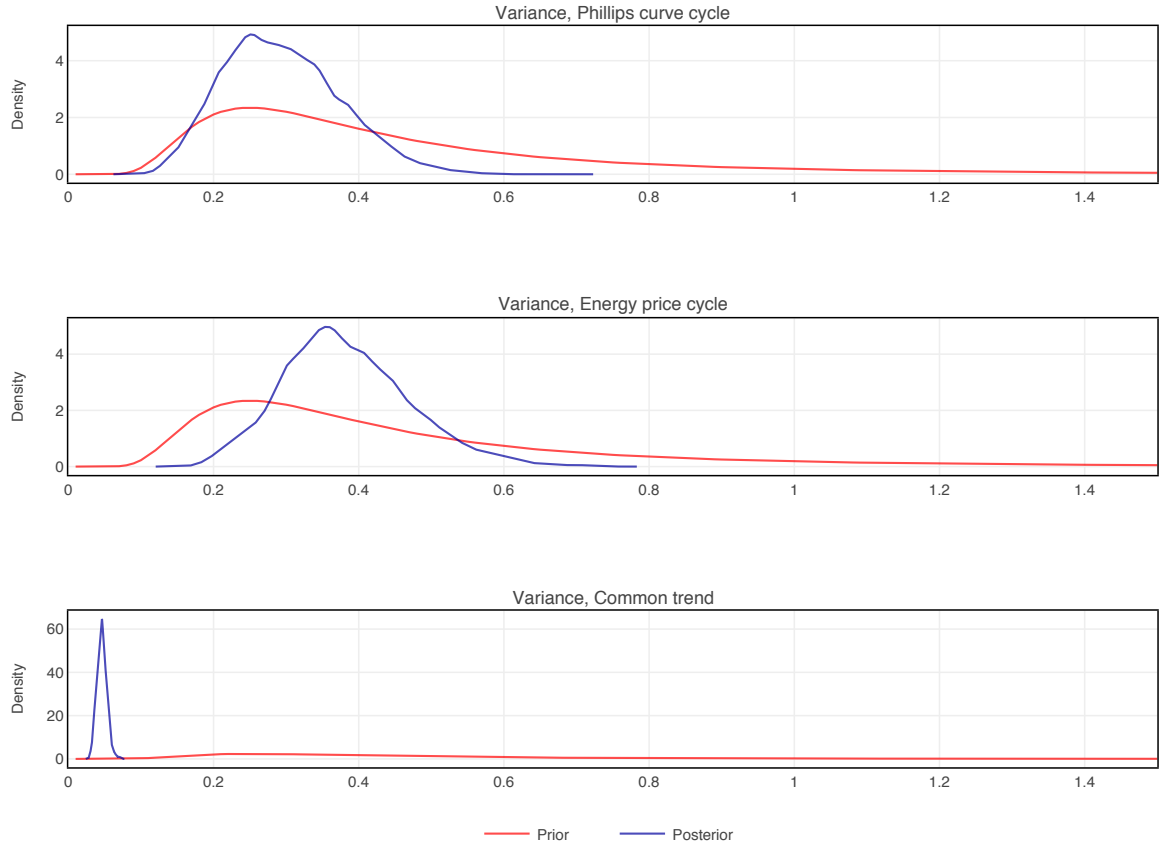
### 4.2. Out-of-sample results

The forecasting exercise is conducted with quarterly data on a sample from Q1 1984 to Q2 2017. The period from Q1 1984 to Q4 1998 serves as our presample and the evaluation sample starts in Q1 1999 and ends in Q2 2017. We use an expanding window and recursively forecast up to 8 quarters ahead. Every quarter we reestimate the model, including the unobserved components and the coefficients. Beside our model (TC), we consider a BVAR where priors are set as in Giannone et al. (2015) and the univariate

**Table 2:** Prior distributions

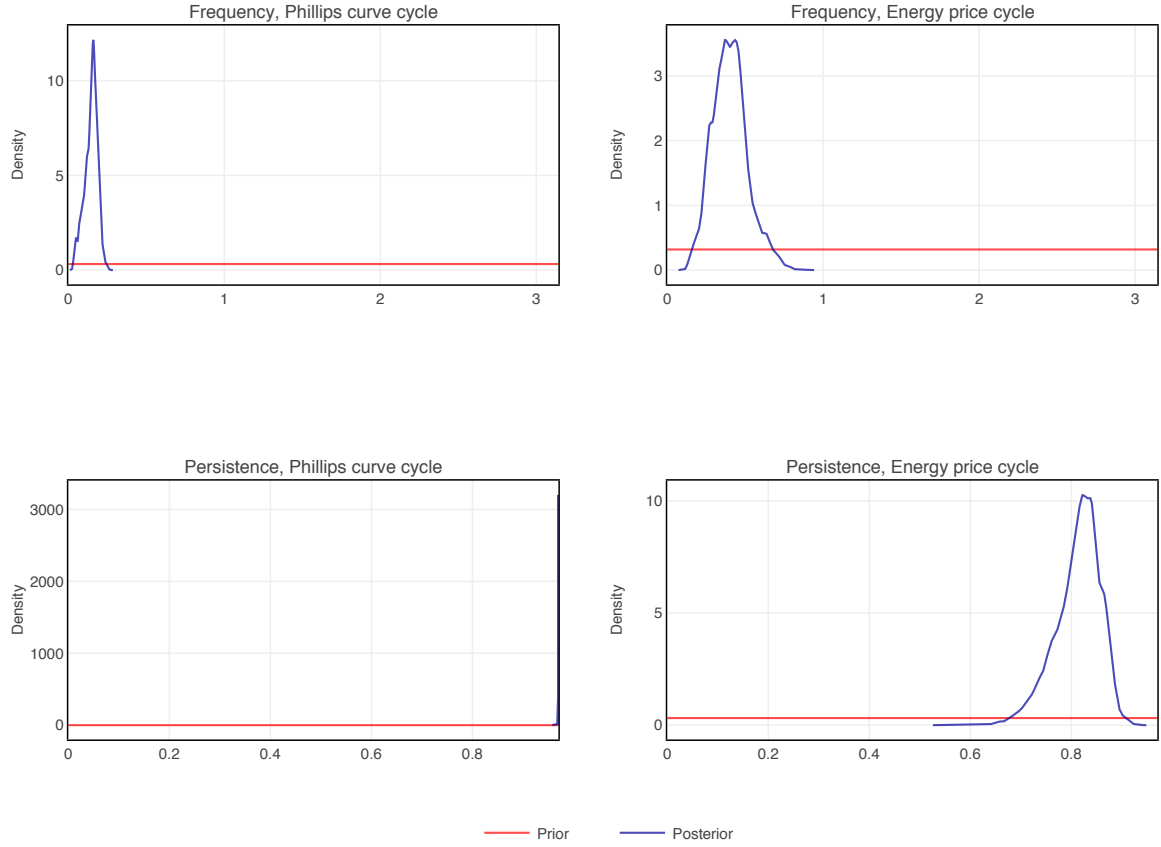
Name	Support	Density	Parameter 1	Parameter 2
$\delta, \gamma, \phi$ and $\tau$	$\mathbb{R}$	Normal	0	1000
$\sigma^2$ and $\varsigma^2$	$(0, \infty)$	Inverse-Gamma	3	1
$\rho$	$[0.001, 0.970]$	Uniform	0.001	0.970
$\lambda$	$[0.001, \pi]$	Uniform	0.001	$\pi$

**Note:** The prior scheme includes only diffuse priors, and refers both to common and idiosyncratic components. The uniform priors ensure that the stochastic cycles are stationary and correctly specified according to the restrictions described in [Harvey \(1990\)](#).

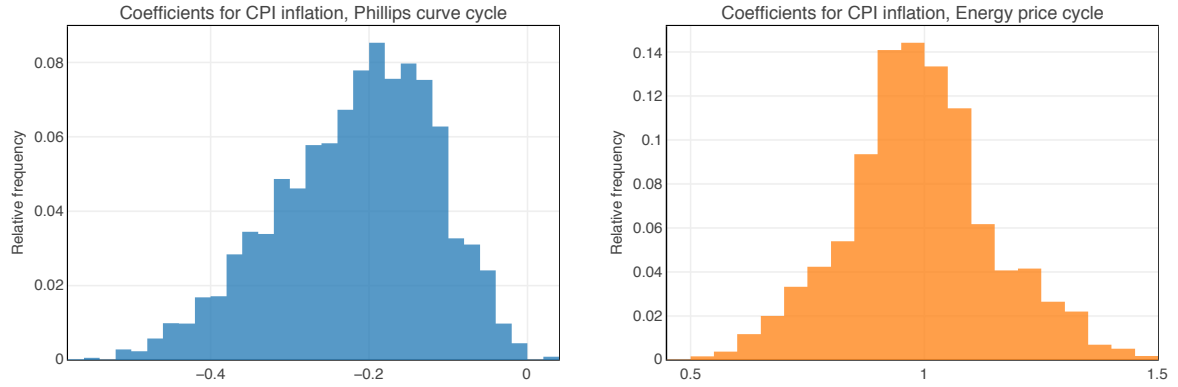
**Figure 9:** Priors and posteriors for the variance of the shocks of the common components

unobserved components IMA(1,1) with stochastic volatility model suggested by [Stock and Watson \(2007\)](#) as being a tough benchmark for inflation forecast. For all models we report the root mean squared forecast errors in relation to that of a random walk with drift for forecasting horizons one, two, four and eight quarters.

Our TC model outperforms all others for CPI inflation and does particularly well at the two years horizon. Our conjecture is that our advantage with respect to the BVAR is driven by the random walk trend which captures the slow-moving low frequency component while the advantage with respect to the UC-SV models is explained by the



**Figure 10:** Priors and posteriors for the frequency and persistence of the common cycles



**Figure 11:** Posterior for the coefficients for CPI inflation

Phillips curve which captures cyclical co-movements. The TC model and the BVAR have similar performance on the other variables with the exception of the unemployment rate one and two quarters ahead where it outperforms us.

We consider these results as strong support for a model with both a variable trend for inflation captured by inflation expectations and a stationary Phillips curve com-

**Table 3:** Relative Root Mean Squared Errors

Horizon	Variable	TC Model	BVAR	UC-SV
h=1	Unemployment rate	0.83	<b>0.65</b>	x
	Real GDP	1.00	<b>0.92</b>	x
	Oil price	<b>1.02</b>	1.08	x
	CPI Inflation	0.92	<b>0.91</b>	1.00
	UOM: Expected inflation	<b>0.97</b>	1.03	x
	SPF: Expected CPI	<b>0.95</b>	1.10	x
h=2	Unemployment rate	0.85	<b>0.68</b>	x
	Real GDP	1.03	<b>0.91</b>	x
	Oil price	<b>1.04</b>	1.18	x
	CPI Inflation	<b>0.87</b>	1.00	0.99
	UOM: Expected inflation	<b>0.95</b>	1.09	x
	SPF: Expected CPI	<b>0.95</b>	1.24	x
h=4	Unemployment rate	0.89	<b>0.79</b>	x
	Real GDP	1.09	<b>0.97</b>	x
	Oil price	<b>1.04</b>	1.26	x
	CPI Inflation	<b>0.81</b>	1.13	0.98
	UOM: Expected inflation	<b>0.93</b>	1.14	x
	SPF: Expected CPI	<b>0.87</b>	1.35	x
h=8	Unemployment rate	<b>0.93</b>	0.97	x
	Real GDP	<b>1.17</b>	1.18	x
	Oil price	<b>1.04</b>	1.39	x
	CPI Inflation	<b>0.79</b>	1.07	0.96
	UOM: Expected inflation	<b>0.92</b>	1.30	x
	SPF: Expected CPI	<b>0.84</b>	1.39	x

**Note:** This table shows the RMSEs relative to the random walk with drift. The BVAR was estimated using [Giannone et al. \(2015\)](#). The UC-SV model was first proposed in [Stock and Watson \(2007\)](#).

ponent.

## 5. Summary of our findings and implications

We have presented an econometric model which provides a formalisation of the ‘Fed’s view’ according to which the three main drivers of inflation are: (i) a trend, reflecting expectations; (ii) the Phillips curve, relating economic slack to prices; and (iii) an oil price component unrelated to real variables. Our econometric model encompasses various specifications of the New Keynesian Phillips curve but also allows for deviations from it.

Our findings point to a very well identified Phillips curve which captures a cyclical component of CPI inflation with maximum power at around eight years periodicity. The latter is defined as the common cycle between real variables, inflation and (survey) inflation expectations. Contrary to a large body of evidence, the Phillips curve is well captured by a linear and constant parameter model such as ours.

CPI inflation, however, has also a sizeable cycle which is unrelated to real variables and captures the correlation between inflation expectations and oil prices. This cycle, which is of slightly shorter periodicity than the Phillips curve and is more volatile, points to a channel through which oil price developments temporarily affect consumer price expectations away from the nominal-real relationship captured by the Phillips curve. In the presence of large oil price shocks this component may dominate. The finding of such a sizeable component suggests a deviation from the rational expectations model of the Phillips curve whereby oil prices affect prices via the output gap and it is in line with the core intuition of the pioneering work of [Coibion and Gorodnichenko \(2015\)](#). However, unlike those authors, we identify a relation between real variables, inflation and inflation expectations which is independent from the oil cycle.

Trend inflation is well captured by SPF expectations and indeed their role is crucial to identify trend inflation as suggested by related literature (see [Lenza and Jarociński \(2016\)](#) and [Mertens \(2016\)](#)). SPFs are found not to be biased while UoM consumer expectations are where the bias is defined as an idiosyncratic unit root component. This suggests only a partial success by the Central Bank in anchoring expectations.

From the policy perspective our findings indicate that the central bank can exploit the Phillips curve trade-off but only in a limited way since the latter, although well identified, is a small component of inflation dynamics. Indeed, some of the so-called puzzles of inflation behaviour of the last decade can be explained by disentangling the Phillips curve from the oil cycle.

Managing expectations, we find, has a key role. A problematic issue for the Central Bank is that, facing volatile and persistent oil price dynamics, consumer expectations can affect price dynamics producing large and persistent deviations from a stable trend.

Our conclusions are therefore quite open-ended. The Fed’s view of inflation being



dominated by three components is supported by the data. However, the ability of the Central Bank to anchor expectations is limited especially because oil affects persistently consumer expectations independently from the state of the real economy.

## A. Metropolis-Within-Gibbs

Starting with the work of [Beveridge and Nelson \(1981\)](#), [Harvey \(1985\)](#), and [Clark \(1987\)](#) several techniques have been suggested to extract interesting signals from the data. However, classical decompositions have been unsuccessful in exploiting a-priori knowledge of the researcher and in obtaining smooth estimates of transitory macroeconomic unobserved components. As summarised in [Harvey et al. \(2007\)](#), maximum likelihood estimation has given inaccurate estimates and - as a result - implausible cycles and trends, and Bayesian estimation methods have been proposed as a solution. This approach succeeds in incorporating a-priori knowledge in the estimation and in developing Metropolis-Within-Gibbs algorithm for estimating both univariate and multivariate trend-cycle decompositions. Nonetheless, this approach performs slowly in large dimensions. Our Metropolis-Within-Gibbs do not require to run a simulation smoother until after the burn-in period. This notably increases the speed of the estimation when the dimension of the state-space is large. Before the burn-in period is reached, only a Kalman filter with exact diffuse initial conditions described in [Koopman and Durbin \(2000\)](#) and [Durbin and Koopman \(2012\)](#) is used to estimate the likelihood function.

### A.1. Estimation

The model is estimated with a Metropolis-Within-Gibbs algorithm. The algorithm is structured in two blocks: 1) the first block uses a Metropolis step for the estimation of the state-space parameters, 2) the second block uses Gibbs sampling to draw the unobserved states conditional on the model parameters.

**Block 1: Metropolis algorithm** The Metropolis step is used to draw all the model parameters jointly, excluding the unobserved states. As a result of the prior parameterisations, most of these parameters are constrained (or bounded) in some dimensions (e.g. the variances of the shocks are greater than zero). A general approach<sup>9</sup> used to tackle this difficulty is to transform the bounded parameters ( $\Theta$ ), so that the support for these transformations ( $\theta$ ) is unbounded. Our Metropolis algorithm draws the model parameters in the unbounded space, in order to avoid a-priori rejections and to obtain a more efficient estimation routine.

**Transformations and Jacobian** The following transformations have been applied to parameters with Normal, Inverse-Gamma and Uniform priors respectively:

---

<sup>9</sup>This description uses the same notation and a similar approach than the one described in [Warne \(2008\)](#)

$$\begin{aligned}
\theta_j^N &= \Theta_j^N \\
\theta_j^{IG} &= \ln(\Theta_j^{IG} - a_j) \\
\theta_j^U &= \ln\left(\frac{\Theta_j^U - a_j}{b_j - \Theta_j^U}\right)
\end{aligned}$$

Where  $a_j$  and  $b_j$  are the lower and the upper bounds for the  $j$ -th parameter. Let  $f(\Theta) = \theta$ , it is possible to define  $f(\theta)^{-1} = \Theta$  for each of these three cases as:

$$\begin{aligned}
\Theta_j^N &= \theta_j^N \\
\Theta_j^{IG} &= \exp(\theta_j^{IG}) + a_j \\
\Theta_j^U &= \frac{a_j + b_j \exp(\theta_j^U)}{1 + \exp(\theta_j^U)}
\end{aligned}$$

The corresponding natural logarithms of the Jacobians of these transformations are:

$$\begin{aligned}
\ln\left(\frac{d\Theta_j^N}{d\theta_j^N}\right) &= 0 \\
\ln\left(\frac{d\Theta_j^{IG}}{d\theta_j^{IG}}\right) &= \theta_j^{IG} \\
\ln\left(\frac{d\Theta_j^U}{d\theta_j^U}\right) &= \ln(b_j - a_j) + \theta_j^U - 2\ln(1 + \exp(\theta_j^U))
\end{aligned}$$

The natural logarithms of the Jacobians have been used to let the prior evaluation unbiased by the transformations described in this paragraph.

**Algorithm** Let  $\Sigma$  be the covariance matrix of the proposal distribution. For  $s = 1, \dots, S$  draws, propose a new value for the unbounded parameters  $(\theta_*)$ , according to a normal proposal distribution with mean  $\theta_{s-1}$  and variance  $\omega\Sigma$ . This proposal is accepted with probability  $\min(1, \eta)$ :

$$\eta = \frac{p(y \mid f(\theta_*)^{-1}) p(f(\theta_*)^{-1}) J(\theta_*)}{p(y \mid f(\theta_{s-1})^{-1}) p(f(\theta_{s-1})^{-1}) J(\theta_{s-1})}$$

Where  $J$  is the Jacobian of the transformations described in the previous paragraph. If the proposal is accepted  $\theta_s = \theta_*$ , otherwise  $\theta_s = \theta_{s-1}$ .  $\omega$  is selected so that the acceptance rate is between 25% and 35%.

***Covariance matrix of the proposal distribution*** In order to set the covariance matrix of the proposal distribution, we run the Metropolis step two times in a row. During the first iteration,  $\Sigma$  is a scaled identity matrix  $\omega I$ . Here, we use a very large number of draws (40,000) and burn-in period (20,000). After, we set  $\Sigma$  equal to the sample covariance of the Markov chains estimated in the previous step and we run again the Metropolis algorithm with 20,000 draws and a burn-in period of 10,000.

**Block 2: Gibbs sampling** After a burn-in period, the [Durbin and Koopman \(2002\)](#) simulation smoother with the [Koopman and Durbin \(2000\)](#) and [Jarociński \(2015\)](#) modifications is used to sample the unobserved states  $(\alpha_s)$ , conditional to  $f(\theta_s)^{-1}$ .

**Code** The code is written in Julia (<http://julialang.org>) and it has been parallelised since it is computationally expensive. It is available on request.

## References

- Klaus Adam and Mario Padula. Inflation Dynamics And Subjective Expectations In The United States. *Economic Inquiry*, 49(1):13–25, January 2011.
- Sungbae An and Frank Schorfheide. Bayesian analysis of dsge models. *Econometric Reviews*, 26(2-4):113–172, 2007. doi: 10.1080/07474930701220071.
- Andrew Atkeson and Lee E. Ohanian. Are Phillips curves useful for forecasting inflation? *Quarterly Review*, (Win):2–11, 2001.
- Nalan Baştürk, Cem Çakmakli, S. Pinar Ceyhan, and Herman K. Van Dijk. Posterior-predictive evidence on us inflation using extended new-keynesian phillips curve models with non-filtered data. *Journal of Applied Econometrics*, 29(7):1164–1182, 2014. ISSN 1099-1255. doi: 10.1002/jae.2411.
- Jushan Bai and Peng Wang. Identification and bayesian estimation of dynamic factor models. *Journal of Business & Economic Statistics*, 33(2):221–240, 2015.
- Arabinda Basistha and Richard Startz. Measuring the NAIRU with Reduced Uncertainty: A Multiple-Indicator Common-Cycle Approach. *The Review of Economics and Statistics*, 90(4):805–811, November 2008.
- Stephen Beveridge and Charles R Nelson. A new approach to decomposition of economic time series into permanent and transitory components with particular attention to measurement of the business cycle. *Journal of Monetary Economics*, 7(2):151–174, 1981.
- Peter K Clark. The cyclical component of us economic activity. *The Quarterly Journal of Economics*, 102(4):797–814, 1987.
- Todd E. Clark and Taeyoung Doh. Evaluating alternative models of trend inflation. *International Journal of Forecasting*, 30(3):426–448, 2014. doi: 10.1016/j.ijforecast.2013.
- Olivier Coibion and Yuriy Gorodnichenko. Is the Phillips Curve Alive and Well after All? Inflation Expectations and the Missing Disinflation. *American Economic Journal: Macroeconomics*, 7(1):197–232, January 2015.
- Olivier Coibion, Yuriy Gorodnichenko, and Rupal Kamdar. The Formation of Expectations, Inflation and the Phillips Curve. NBER Working Papers 23304, National Bureau of Economic Research, Inc, March 2017.

- Michael Dotsey, Robert G. King, and Alexander L. Wolman. State-Dependent Pricing and the General Equilibrium Dynamics of Money and Output. *The Quarterly Journal of Economics*, 114(2):655–690, 1999.
- James Durbin and Siem Jan Koopman. A simple and efficient simulation smoother for state space time series analysis. *Biometrika*, pages 603–615, 2002.
- James Durbin and Siem Jan Koopman. *Time series analysis by state space methods*, volume 38. OUP Oxford, 2012.
- Christopher J. Erceg and Andrew T. Levin. Imperfect credibility and inflation persistence. *Journal of Monetary Economics*, 50(4):915–944, May 2003.
- Jon Faust and Jonathan H. Wright. Forecasting inflation. volume 2, chapter Chapter 1, pages 2–56. Elsevier, 2013.
- Jordi Gali and Mark Gertler. Inflation dynamics: A structural econometric analysis. *Journal of Monetary Economics*, 44(2):195–222, October 1999.
- Domenico Giannone, Michele Lenza, and Giorgio E Primiceri. Prior selection for vector autoregressions. *Review of Economics and Statistics*, 97(2):436–451, 2015.
- Robert Gordon. *US Inflation, Labor’s Share, and the Natural Rate of Unemployment*, pages 1–34. New York: Springer-Verlag, 09 1990.
- Robert Gordon. The history of the phillips curve: Consensus and bifurcation. *Economica*, 78(309):10–50, 2011.
- Robert J. Gordon. *Inflation, Flexible Exchange Rates, and the Natural Rate of Unemployment*. Brookings Institution, 1982.
- Robert Hall, Mark Watson, James Stock, and John Fernald. The Slow Recovery in Output after 2009. 2017 Meeting Papers 610, Society for Economic Dynamics, 2017.
- Andrew C Harvey. Trends and cycles in macroeconomic time series. *Journal of Business & Economic Statistics*, 3(3):216–227, 1985.
- Andrew C Harvey. *Forecasting, structural time series models and the Kalman filter*. Cambridge university press, 1990.
- Andrew C Harvey, Thomas M Trimbur, and Herman K Van Dijk. Trends and cycles in economic time series: A bayesian approach. *Journal of Econometrics*, 140(2): 618–649, 2007.

- S. G. B Henry and A. R. Pagan. The econometrics of the new keynesian policy model: Introduction. *Oxford Bulletin of Economics and Statistics*, 66:581–607, 2004. ISSN 1468-0084. doi: 10.1111/j.1468-0084.2004.00094.x.
- Marek Jarociński. A note on implementing the durbin and koopman simulation smoother. *Computational Statistics & Data Analysis*, 91:1–3, 2015.
- Siem J Koopman and James Durbin. Fast filtering and smoothing for multivariate state space models. *Journal of Time Series Analysis*, 21(3):281–296, 2000.
- Kenneth N Kuttner. Estimating Potential Output as a Latent Variable. *Journal of Business & Economic Statistics*, 12(3):361–368, July 1994.
- Michele Lenza and Marek Jarociński. An inflation-predicting measure of the output gap in the euro area. Working Paper Series 1966, European Central Bank, September 2016.
- Sophocles Mavroeidis, Mikkel Plagborg-Møller, and James H. Stock. Empirical evidence on inflation expectations in the new keynesian phillips curve. *Journal of Economic Literature*, 52(1):124–88, March 2014. doi: 10.1257/jel.52.1.124.
- Elmar Mertens. Measuring the Level and Uncertainty of Trend Inflation. *The Review of Economics and Statistics*, 98(5):950–967, December 2016.
- Fabio Milani. Expectations, learning and macroeconomic persistence. *Journal of Monetary Economics*, 54(7):2065–2082, October 2007.
- Emi Nakamura and Jón Steinsson. Price Rigidity: Microeconomic Evidence and Macroeconomic Implications. *Annual Review of Economics*, 5(1):133–163, 05 2013.
- James M. Nason and Gregor W. Smith. Identifying the new keynesian phillips curve. *Journal of Applied Econometrics*, 23(5):525–551, 2008. ISSN 1099-1255. doi: 10.1002/jae.1011.
- Thorvardur Tjörvi Ólafsson. The New Keynesian Phillips Curve: In Search of Improvements and Adaptation to the Open Economy. Economics 31, Department of Economics, Central bank of Iceland, September 2006.
- Christophe Planas, Alessandro Rossi, and Gabriele Fiorentini. Bayesian analysis of the output gap. *Journal of Business & Economic Statistics*, 26(1):18–32, 2008. ISSN 07350015.
- Jeremy Rudd and Karl Whelan. Modeling inflation dynamics: A critical review of recent research. *Journal of Money, Credit and Banking*, 39:155–170, 2007. ISSN 1538-4616. doi: 10.1111/j.1538-4616.2007.00019.x.

- Christopher A. Sims. Inflation expectations, uncertainty, the Phillips curve, and monetary policy. *Conference Series ; [Proceedings]*, 53, 2008.
- James H Stock and Mark W Watson. Why has us inflation become harder to forecast? *Journal of Money, Credit and banking*, 39(s1):3–33, 2007.
- Christopher Tsoukis, George Kapetanios, and Joseph Pearlman. Elusive Persistence: Wage And Price Rigidities, The New Keynesian Phillips Curve And Inflation Dynamics. *Journal of Economic Surveys*, 25(4):737–768, 09 2011.
- Anders Warne. Yada manual. *Manuscript, December*, 18, 2008.
- Janet L. Yellen. Macroeconomic research after the crisis, October 2016. Speech by Chair Janet L. Yellen at "The Elusive ‘Great’ Recovery: Causes and Implications for Future Business Cycle Dynamics" 60th annual economic conference sponsored by the Federal Reserve Bank of Boston, Boston, Massachusetts.



## ABOUT OFCE

---

The Paris-based Observatoire français des conjonctures économiques (OFCE), or French Economic Observatory is an independent and publicly-funded centre whose activities focus on economic research, forecasting and the evaluation of public policy.

Its 1981 founding charter established it as part of the French Fondation nationale des sciences politiques (Sciences Po), and gave it the mission is to “ensure that the fruits of scientific rigour and academic independence serve the public debate about the economy”. The OFCE fulfils this mission by conducting theoretical and empirical studies, taking part in international scientific networks, and assuring a regular presence in the media through close cooperation with the French and European public authorities. The work of the OFCE covers most fields of economic analysis, from macroeconomics, growth, social welfare programmes, taxation and employment policy to sustainable development, competition, innovation and regulatory affairs.

## ABOUT SCIENCES PO

---

Sciences Po is an institution of higher education and research in the humanities and social sciences. Its work in law, economics, history, political science and sociology is pursued through ten research units and several crosscutting programmes.

Its research community includes over two hundred twenty members and three hundred fifty PhD candidates. Recognized internationally, their work covers a wide range of topics including education, democracies, urban development, globalization and public health.

One of Sciences Po's key objectives is to make a significant contribution to methodological, epistemological and theoretical advances in the humanities and social sciences. Sciences Po's mission is also to share the results of its research with the international research community, students, and more broadly, society as a whole.

## PARTNERSHIP

---